

Home of the New

SUPER-EDGETM



Elmer's Flighting Supply Inc.

R.R. # 2 7635 HWY 21 ALLENFORD, ONTARIO, CANADA N0H 1A0
TEL: 519-934-2193 FAX: 519-934-2361

2024 SEED & FERTILIZER

PRODUCT CATALOGUE

Visit us on the web

WEB www.elmersflighting.com

E-mail info@elmersflighting.com

INDEX

	ELMER'S COVER SHEET	PG. 1
	ELMER'S INDEX	PG. 2
	Y2000 CATALOGUE SHEET	PG. 3
EM-Y2000B 6"	HYDRAULIC TRANSPORT AUGERS	PG. 4
EM-Y2000B 8"	HYDRAULIC TRANSPORT AUGERS	PG. 5
EM-Y2000 10"	HYDRAULIC TRANSPORT AUGER	PG. 6
	GRAVITY BOX AUGER CATALOGUE SHEET	PG. 7
EM-G.B. 12'14'	GRAVITY BOX AUGERS	PG. 8-9
EM-S&F	SEED & FERTILIZER SHAFT & FLIGHTING	PG. 10
EM-RT	SEED & FERTILIZER REPLACEMENT TUBES & BRISTLE FLIGHT	PG. 11
EM-SSS&F	STAINLESS STEEL SHAFTS & FLIGHTS	PG. 12
	POLY CUP FLIGHTING 5" & 7"	PG. 13
EM-ACC.	SEED AUGER ACCESSORIES	PG. 14-16
	SEED AUGER ACCESSORIES /REPLACEMENT PARTS	PG. 17

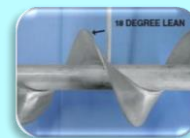


STANDARD FEATURES:

- 6" X 21', 6" X 26', 6" X 31', 8" X 21', 8" X 26', 8" X 31', 10" X 31'
- 3/16" FULL TILT CUPPED FLIGHTING
- 6"OD X 14GA OR 8"OD X 14GA GALVANIZED TUBE
- HYDRAULIC ORBIT MOTOR (size of motor based on size of auger)
- BEARING AT BOTTOM OF INTAKE GUARD
- 3 STAGE TELESCOPIC DOWNSPOUT – 6" MODEL ONLY
- (Optional telescopic downspout available on 8")
- POWDER COATED UNDERCARRIAGE
- PLASTIC HOPPER
- TOW HITCH (REMOVEABLE)
- 15" HIGH SPEED WHEELS WITH HEAVY DUTY UNDER CARRIAGE
- SAFETY BRAKE WINCH

OPTIONAL EQUIPMENT:

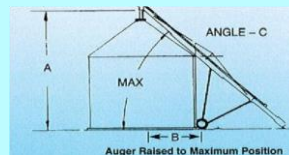
- HYDRAULIC LINE HOSE HOLDER
- SLOW MOVING VEHICLE SIGN
- SAFETY CHAIN
- 12 VOLT ELECTRIC SOLENOID WITH WIRELESS REMOTE CONTROL
- STAINLESS STEEL FULL TILT CUPPED FLIGHTING
- POLY CUPPED FLIGHTING



"FULL TILT CUPPED FLIGHT"

ADJUSTABLE HEIGHT:

21'	26'	31'
A 12'	A 15'6"	A 16' 1/2"
B 5' 8"	B 7' 6"	B 10'
C 37 deg.	C 40 deg.	C 30 deg.



6" Y2000 TRANSPORT AUGER

2024

BOM	<u>PART #</u>	<u>BASIC MODEL</u>	<u>LIST PRICE</u>	<u>COST</u>
⇒	EM-Y2000621B	6" X 21' HYDRAULIC TRANSPORT AUGER WITH CUPPED FLIGHTING & MANUAL CONTROL	\$5,249.00	\$3,377.91
⇒	EM-Y2000626B	6" X 26' HYDRAULIC TRANSPORT AUGER WITH CUPPED FLIGHTING & MANUAL CONTROL	\$5,995.00	\$3,955.28
⇒	EM-Y2000631B	6" X 31' HYDRAULIC TRANSPORT AUGER WITH CUPPED FLIGHTING & MANUAL CONTROL	\$6,275.00	\$4,043.16

BASIC FEATURES included in price:

- 6" OD X 15GA GALVANIZED TUBE
- 5" OD X 3/16" FULL TILT CUPPED FLIGHTING
- 6 CUBIC INCH WHITE ORBIT MOTOR ON 21' MODEL
- 10 CUBIC INCH WHITE ORBIT MOTOR ON 26' & 31' MODEL
- BEARING AT BOTTOM OF INTAKE GUARD
- ON/OFF CONTROL VALVE W/ ROPE CONTROL
- 1400 LBS BRAKE WINCH ASSEMBLY
- **3-STAGE TELESCOPING DOWNSPOUT 5'-13'**
- HIGH SPEED 15" WHEELS, W/NEW TIRES
- PLASTIC HOPPER

OPTIONAL STAINLESS SHAFT & FLIGHT:

			2024	x2.1
⇒	SSSF621	6 X 21 STAINLESS STEEL CUPPED SHAFT & FLIGHT	(ADD) \$877.99	\$418.09
⇒	SSSF626	6 X 26 STAINLESS STEEL CUPPED SHAFT & FLIGHT	(ADD) \$1,134.50	\$540.24
⇒	SSSF631	6 X 31 STAINLESS STEEL CUPPED SHAFT & FLIGHT	(ADD) \$1,336.00	\$636.19

OPTIONAL PLASTIC POLY CUP ON STAINLESS HEX SHAFT:

SA5PCSFSS21	6 X 21	POLY CUPPED ON STAINLESS STEEL HEX CORE	(ADD) \$877.99	\$418.09
SA5PCSFSS26	6 X 26	POLY CUPPED ON STAINLESS STEEL HEX CORE	(ADD) \$1,134.50	\$540.24
SA5PCSFSS31	6 X 31	POLY CUPPED ON STAINLESS STEEL HEX CORE	(ADD) \$1,336.00	\$636.19

OPTIONAL EQUIPMENT

			2023	x2.3
ELM-006		1/2" HYD HOSES 25' LONG 1/2NPT MALE SOLID 1/2NPT MALE SWIVEL w/ S71-4	\$457.01	\$198.70
EM-Y2000-10		1 HYDRAULIC HOSE HOLDER	\$105.23	\$45.75
EM-Y2000-40		1 SAFETY CHAIN & HOOK	\$49.04	\$21.32
EM-SMV		1 SMV SIGN	\$11.71	\$5.09
SA62S47		6" 2 STAGE TELESCOPIC DOWNSPOUT 4' - 7' w Handle	\$334.72	\$145.53

1 ALL BRACKETS , CHANNELS & ACCESSORIES ARE WELDED TO THE TUBE AND ARE NOT REMOVEABLE

1 ONTARIO STEWARDSHIP TIRE TAX OF \$4.25 PER TIRE WILL BE CHARGED ON ALL Y2000 AUGERS

ALL STAINLESS STEEL TUBE AND SCREW

			2024	
BOM	<u>PART #</u>	<u>BASIC MODEL</u>	<u>LIST PRICE</u>	<u>COST</u>
⇒	EM-Y2000621SS	6" X 21' 304 SS HYDRAULIC TRANSPORT AUGER WITH CUPPED FLIGHTING, MANUAL CONTROL AND STAINLESS INTAKE GUARD	\$8,600.00	\$4,234.93
⇒	EM-Y2000626SS	6" X 26' 304 SS HYDRAULIC TRANSPORT AUGER WITH CUPPED FLIGHTING, MANUAL CONTROL AND STAINLESS INTAKE GUARD	\$8,795.00	\$4,957.70
⇒	EM-Y2000631SS	6" X 31' 304 SS HYDRAULIC TRANSPORT AUGER WITH CUPPED FLIGHTING, MANUAL CONTROL AND STAINLESS INTAKE GUARD	\$9,225.00	\$5,153.27

8" Y2000 TRANSPORT AUGER

2024

<u>PART #</u>	<u>BASIC MODEL</u>	<u>LIST PRICE</u>	<u>COST</u>
⇒ EM-Y2000821B	8" X 21' HYDRAULIC TRANSPORT AUGER WITH CUPPED FLIGHTING & MANUAL CONTROL	\$6,275.00	\$3,513.15
⇒ EM-Y2000826B	8" X 26' HYDRAULIC TRANSPORT AUGER WITH CUPPED FLIGHTING & MANUAL CONTROL	\$6,898.00	\$4,420.80
⇒ EM-Y2000831B	8" X 31' HYDRAULIC TRANSPORT AUGER WITH CUPPED FLIGHTING & MANUAL CONTROL	\$7,139.00	\$4,324.46

BASIC FEATURES included in price:

- 8" OD X 15GA GALVANIZED TUBE
- 7" OD X 3/16" FULL TILT CUPPED FLIGHTING
- 10 CUBIC INCH WHITE ORBIT MOTOR
- BEARING AT BOTTOM OF INTAKE GUARD
- ON/OFF CONTROL VALVE W/ ROPE CONTROL
- 1400 LBS BRAKE WINCH ASSEMBLY
- HIGH SPEED 15" WHEELS, W/NEW TIRES
- PLASTIC HOPPER
- TELESCOPIC DOWNSPOUT NOT INCLUDED

OPTIONAL STAINLESS SHAFT & FLIGHT:

2024

cost x 2.1

⇒ SSSF821	8 X 21 STAINLESS STEEL NON CUPPED SHAFT & FLIGHT	(ADD) \$1,443.83	\$687.54
⇒ SSSF826	8 X 26 STAINLESS STEEL NON CUPPED SHAFT & FLIGHT	(ADD) \$1,863.73	\$887.49
⇒ SSSF831	8 X 31 STAINLESS STEEL NON CUPPED SHAFT & FLIGHT	(ADD) \$2,187.97	\$1,041.89

OPTIONAL PLASTIC POLY CUP ON STAINLESS HEX SHAFT:

SA7PCSFSS21	8 X 21 POLY CUPPED ON STAINLESS STEEL HEX CORE	(ADD) \$1,443.83	
SA7PCSFSS26	8 X 26 POLY CUPPED ON STAINLESS STEEL HEX CORE	(ADD) \$1,863.73	
SA7PCSFSS31	8 X 31 POLY CUPPED ON STAINLESS STEEL HEX CORE	(ADD) \$2,187.97	

OPTIONAL EQUIPMENT

2024

cost

SA82S611	8" 2 STAGE TELESCOPIC DOWNSPOUT	6' - 11' w Handle	\$344.15	\$149.63
SA83S616	8" 3 STAGE TELESCOPIC DOWNSPOUT	6'-16' w Handle	\$344.15	\$149.63
EM-Y2000-10	1 HYDRAULIC HOSE HOLDER		\$105.23	\$45.75
EM-Y2000-40	1 SAFETY CHAIN & HOOK		\$49.04	\$21.32
EM-SMV	1 SMV SIGN		\$11.71	\$5.09
ELM-006	1/2" HYD HOSES 25' LONG 1/2NPT MALE SOLID 1/2NPT MALE SWIVEL WITH S71-4		\$457.01	\$198.70
	1 ALL BRACKETS , CHANNELS & ACCESSORIES ARE WELDED TO THE TUBE AND ARE NOT REMOVEABLE			
	1 ONTARIO STEWARDSHIP TIRE TAX OF \$4.25 PER TIRE WILL BE CHARGED ON ALL Y2000 AUGERS			

ALL STAINLESS STEEL TUBE AND SCREW

<u>PART #</u>	<u>DESCRIPTION</u>	<u>LIST PRICE</u>	<u>COST</u>
⇒ EM-Y2000821SS	8" X 21' 304 SS HYDRAULIC TRANSPORT AUGER WITH NON CUPPED FLIGHTING, MANUAL CONTROL AND STAINLESS INTAKE GUARD	\$8,945.00	\$5,564.48
⇒ EM-Y2000826SS	8" X 26' 304 SS HYDRAULIC TRANSPORT AUGER WITH NON CUPPED FLIGHTING, MANUAL CONTROL AND STAINLESS INTAKE GUARD	\$9,898.00	\$6,590.59
⇒ EM-Y2000831SS	8" X 31' 304 SS HYDRAULIC TRANSPORT AUGER WITH NON CUPPED FLIGHTING, MANUAL CONTROL AND STAINLESS INTAKE GUARD	\$10,198.00	\$7,082.72

10" Y2000 TRANSPORT AUGER

2024

<u>PART #</u>			<u>LIST PRICE</u>	<u>COST</u>
⇒ EM-Y20001031	10" x 31'	HYDRAULIC TRANSPORT AUGER WITH CUPPED FLIGHTING & MANUAL CONTROL	\$10,997.00	\$4,569.54

STANDARD FEATURES:

- 31' IN LENGTH
- 10" OD X 14 GA GALVANIZED TUBE
- 9" OD X 3/16" FULL TILT CUPPED FLIGHTING
- 12.5 CUBIC INCH WHITE ORBIT MOTOR
- BEARING AT BOTTOM OF INTAKE GUARD
- ON/OFF CONTROL VALVE
- 1400 LBS. BRAKE WINCH ASSEMBLY
- HYDRAULIC HOSE HOLDER
- HIGH SPEED 15" WHEELS, W/NEW TIRES
- BIG DADDY PLASTIC HOPPER
- SAFETY CHAIN
- SMV SIGN

NOTE: 3/4" HYDRAULIC LINES ARE REQUIRED ON THIS UNIT

<u>OPTIONAL STAINLESS SHAFT & FLIGHT: 10 X 31</u>			<u>LIST PRICE</u>	
⇒ SSSF1031	STAINLESS STEEL SHAFT & FLIGHT (NON CUPPED)	(ADD)	\$3,450.00	\$1,326.11

<u>OPTIONAL DOWNSPOUT</u>			<u>LIST PRICE</u>	
SA102S611	10" 2 STAGE TELESCOPIC DOWNSPOUT	6'-11" w Handle	\$769.60	\$334.61

<u>ALL STAINLESS STEEL TUBE AND SCREW</u>			<u>LIST PRICE</u>	
⇒ EM-Y20001031SS	10" X 31'	304 SS HYDRAULIC TRANSPORT AUGER WITH NON CUPPED FLIGHTING, MANUAL CONTROL AND STAINLESS INTAKE GUARD	\$14,989.00	\$5,159.02

1 ALL BRACKETS , CHANNELS & ACCESSORIES ARE WELDED TO THE TUBE AND ARE NOT REMOVEABLE

1 ONTARIO STEWARDSHIP TIRE TAX OF \$4.25 PER TIRE WILL BE CHARGED ON ALL Y2000 AUGERS



Custom Augers

FULL TILT CUPPED FLIGHTING

MADE IN CANADA 

manufactured by Elmers Flighting Supply Inc.

519-934-2193 info@elmersflighting.com www.elmersflighting.com

12', 14' & 15' SEED & FERTILIZER AUGERS FOR GRAVITY BOXES



STANDARD FEATURES:

- 6" OD X 14 GA GALVANIZED TUBE
- 5" OD X 3/16" STEEL FULL TILT CUPPED FLIGHTING STANDARD
- 6 CUBIC INCH WHITE ORBIT MOTOR W/HOLE IN SHAFT, 4 BOLT MOUNT
- WOOD BEARING AT BOTTOM
- ON/OFF SWITCH
- 650 LBS SAFETY BRAKE WINCH
- CABLE & PULLEY
- HYDRAULIC LINE HOSE HOLDER
- HOPPER & AUTO LOCK CRADLE
- 3' PLASTIC FLEX PIPE (OPTION EQUIPMENT – 2 OR 3 STAGE TELESCOPIC DOWNSPOUT)
(8" X 14" model available. Consult office for pricing)
- REMOVABLE END CAP FOR CLEAN OUT
- STANDARD HOPPER WILL FIT DOOR OPENINGS OF 35" OR LESS FOR WIDER DOORS CONSULT OFFICE FOR LARGER HOPPERS
- PARKER & DEMCO BOXES MAY REQUIRE LARGER HOPPERS
- WHEN MOUNTING ON A DEMCO BOX, SOME WELDING IS REQUIRED.

OPTIONAL FLIGHTING AVAILABLE IN:

- FULL TILT STAINLESS STEEL CUPPED
- PLASTIC CUPPED
- OR BRISTLE FLIGHT



"Full Tilt Cupped Flite"

NOTE: HYDRAULIC LINE FROM AUGER TO TRACTOR IS NOT SUPPLIED.

8" Model/Box must be securely fastened to under carriage and counterweights may be needed on other side of box.

PHONE: 519-934-2193

FAX: 519-934-2361

info@elmersflighting.com

www.elmersflighting.com

6" GRAVITY BOX MOUNT AUGER KITS

2024

<u>PART #</u>	<u>MODEL</u>	<u>LIST PRICE</u>	<u>COST</u>
⇒ EM-GB612	6" X 12' GRAVITY BOX MOUNT SEED AND FERTILIZER AUGER KIT	\$2,979.00	\$2,161.54
⇒ EM-GB614	6" X 14' GRAVITY BOX MOUNT SEED AND FERTILIZER AUGER KIT	\$3,039.00	\$2,187.82
⇒ EM-GB615	6" X 15' GRAVITY BOX MOUNT SEED AND FERTILIZER AUGER KIT	\$3,139.00	\$1,939.84

STANDARD FEATURES:

- 6" OD X 14GA GALVANIZED TUBE
- 5" OD X 3/16" FULL TILT CUPPED FLIGHTING
- 6 CUBIC INCH WHITE ORBIT MOTOR
- NYLON 1 1/16" BEARING AT BOTTOM
- ON/OFF CONTROL VALVE
- 1400 LBS BRAKE WINCH ASSEMBLY
- SAFETY CABLE AND PULLEY
- AUTO LATCH CRADLE AND HOPPER
- 3' OF RUBBERIZED FLEX PIPE
- REMOVABLE CLEAN OUT CAP AT BOTTOM
- HYDRAULIC HOSE HOLDER
- STANDARD HOPPER WILL FIT DOOR OPENINGS OF 35" OR LESS
BOXES WITH A LARGER DOOR CONSULT OFFICE FOR LARGER HOPPERS.

OPTIONAL STAINLESS SHAFT & FLIGHT

⇒ SSSFGB612	6" X 12' STAINLESS STEEL CUPPED SHAFT & FLIGHT	(ADD) \$663.45	\$442.30
⇒ SSSFGB614	6" X 14' STAINLESS STEEL CUPPED SHAFT & FLIGHT	(ADD) \$742.68	\$495.12
⇒ SSSFGB615	6" X 15' STAINLESS STEEL CUPPED SHAFT & FLIGHT	(ADD) \$782.30	\$521.00

OPTIONAL PLASTIC POLY CUP ON GALVANIZED HEX SHAFT

SA5PCSF12	6" X 12' POLY CUPPED ON GALV. HEX STEEL CENTRE TUBE	(ADD) \$663.45	
SA5PCSF14	6" X 14' POLY CUPPED ON GALV. HEX STEEL CENTRE TUBE	(ADD) \$742.68	
SA5PCSF15	6" X 15' POLY CUPPED ON GALV. HEX STEEL CENTRE TUBE	(ADD) \$782.30	

OPTIONAL EQUIPMENT

ELM-006	1/2" HYD HOSES 25' LONG 1/2NPT MALE SOLID 1/2NPT MALE SWIVEL SET WITH S71-4	\$457.01	\$198.70
SA62S47	6" 2 STAGE TELESCOPIC DOWNSPOUT 4' - 7' w Handle	\$334.72	\$145.53
SA63S513	6" 3 STAGE TELESCOPIC DOWNSPOUT 5' - 13' w Handle	\$422.05	\$183.50
SA63S616	6" 3 STAGE TELESCOPIC DOWNSPOUT 6'-16' w Handle	\$365.65	\$158.98

NOTE:

- PARKER AND DEMCO BOXES MAY REQUIRE LARGER HOPPERS
- WHEN MOUNTING ON A DEMCO BOX SOME WELDING IS REQUIRED

ALL STAINLESS STEEL TUBE, SCREW AND HOPPER

(INCLUDES ALL ACC'S AS MILD STEEL)

<u>PART #</u>	<u>MODEL</u>	<u>LIST PRICE</u>	
⇒ EM-GB612SS	6" X 12' ALL STAINLESS GRAVITY BOX MOUNT SEED AND FERTILIZER AUGER KIT	\$4,905.39	\$2,132.78
⇒ EM-GB614SS	6" X 14' ALL STAINLESS GRAVITY BOX MOUNT SEED AND FERTILIZER AUGER KIT	\$5,083.83	\$2,210.36
⇒ EM-GB615SS	6" X 15' ALL STAINLESS GRAVITY BOX MOUNT SEED AND FERTILIZER AUGER KIT	\$5,172.84	\$2,249.06

8" GRAVITY BOX MOUNT AUGER KITS

2024

<u>PART #</u>	<u>MODEL</u>	<u>LIST PRICE</u>	<u>cost</u> <u>x 2.3</u>
⇒ EM-GB814	8" x 14' GRAVITY BOX MOUNT SEED AND FERTILIZER AUGER KIT	\$4,691.08	\$2,039.60

STANDARD FEATURES:

- 8" OD X 14' X 14GA GALVANIZED TUBE
- 7" OD X 3/16" FULL TILT CUPPED FLIGHTING
- 6 CUBIC INCH WHITE ORBIT MOTOR
- * NYLON 1 1/6" BEARING AT BOTTOM
- ON/OFF CONTROL VALVE
- 1400LBS BRAKE WINCH ASSEMBLY
- SAFETY CABLE AND PULLEY
- AUTO LATCH CRADLE AND HOPPER
- 3' OF RUBBER FLEX PIPE
- REMOVABLE CLEAN OUT CAP AT BOTTOM
- HYDRAULIC HOSE HOLDER
- STANDARD HOPPER WILL FIT DOOR OPENINGS OF 35" OR LESS.
BOXES WITH A LARGER DOOR CONSULT OFFICE FOR LARGER HOPPERS.

OPTIONAL STAINLESS SHAFT & FLIGHT

SSSFGB814	14' STAINLESS STEEL SHAFT & FLIGHT NON CUPPED	(ADD)	\$994.34	\$432.32 S&F only
------------------	--	-------	-----------------	----------------------

OPTIONAL PLASTIC POLY CUP ON STAINLESS HEX SHAFT

⇒ SA7PCSFSS14	14' POLY CUPPED ON STAINLESS STEEL HEX CORE	(ADD)	\$994.34	
---------------	---	-------	-----------------	--

OPTIONAL EQUIPMENT

<u>PART #</u>	<u>MODEL</u>	<u>LIST PRICE</u>	<u>x 2.3</u>
ELM-006	1/2" HYD HOSES 25' LONG 1/2NPT MALE SOLID 1/2NPT MALE SWIVEL SET WITH S71-4	\$457.01	\$198.70
SA82S611	8" 2 STAGE TELESCOPIC DOWNSPOUT 6' - 11' w Handle	\$344.15	\$149.63
SA83S616	8" 3 STAGE TELESCOPIC DOWNSPOUT 6'-16' w Handle	\$344.15	\$149.63

NOTE: 1 PARKER AND DEMCO BOXES MAY REQUIRE LARGER HOPPERS
1 WHEN MOUNTING ON A DEMCO BOX SOME WELDING IS REQUIRED

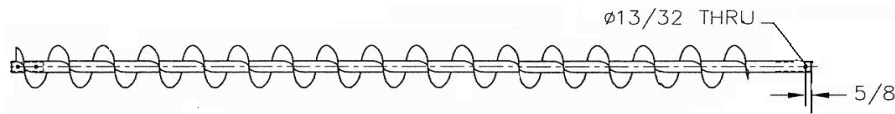
ALL STAINLESS STEEL TUBE, SCREW AND HOPPER (INCLUDES ALL ACC'S AS MILD STEEL)

<u>PART #</u>	<u>MODEL</u>	<u>LIST PRICE</u>	
⇒ EM-GB814SS	8" x 14' ALL STAINLESS GRAVITY BOX MOUNT SEED AND FERTILIZER AUGER KIT NON CUPPED	\$7,171.86	\$3,118.20

SEED & FERTILIZER AUGER SHAFTS & FLIGHTS

2024

**FLIGHTING MOUNTED ON 1 5/16" X .120 WALL TUBE
AUGER C/W 3/8" HOLE DRILLED BACK 5/8" FROM END, 7" BARE SHAFT AT END**

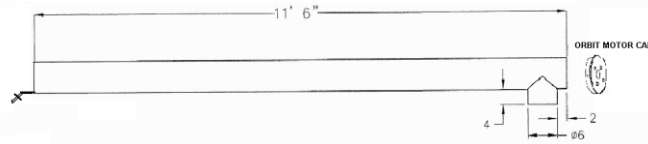


13/32" HOLE, 5/8" FROM END

	<u>PART#</u>	<u>5" SUPER-EDGE AUGER</u>	<u>LIST PRICE</u>	<u>cost x 2.3</u>
	SF-5X13410SE	10' AUGER	\$264.32	\$114.92
	SF-5X13412SE	12' AUGER	\$296.49	\$128.91
	SF-5X13414SE	14' AUGER	\$363.15	\$157.89
	SF-5X13416SE	16' AUGER	\$395.30	\$171.87
	SF-5X13418SE	18' AUGER	\$479.23	\$208.36
	SF-5X13420SE	20' AUGER	\$511.38	\$222.34
	SF-5X13421SES	21' AUGER W/ 1" STUB	\$571.44	\$248.45
 <u>5 1/4" SUPER-EDGE AUGER</u>				
	SF-525X12510SE	10' AUGER	\$240.60	\$93.27
	SF-525X12512SE	12' AUGER	\$282.40	\$102.92
	SF-525X12514SE	14' AUGER	\$304.21	\$127.58
	SF-525X12516SE	16' AUGER	\$375.30	\$137.23
	SF-525X12518SE	18' AUGER	\$397.11	\$169.39
	SF-525X12520SE	20' AUGER	\$418.91	\$164.04
	SF-525X12521SES	21' AUGER W/ 1" STUB	\$482.93	\$209.97
 <u>5" CUPPED FLIGHT</u>				
	SF-5X13410C	10' AUGER	\$246.93	\$91.89
	SF-5X13412C	12' AUGER	\$289.99	\$105.77
	SF-5X13414C	14' AUGER	\$313.06	\$125.65
	SF-5X13416C	16' AUGER	\$385.42	\$135.02
	SF-5X13418C	18' AUGER	\$408.50	\$166.90
	SF-5X13420C	20' AUGER	\$431.56	\$176.28
	SF-5X13421CS	21' AUGER W/ 1" STUB	\$476.26	\$207.07
	SF-5X13426CS	26' AUGER W/ 1" STUB	\$555.69	\$230.52
	SF-5X13431CS	31' AUGER W/ 1" STUB	\$635.36	\$276.46
 <u>FLIGHTING ONLY</u>				
	HR5X5X1.34X3/16SE	5"---3/16 SUPER-EDGE FLIGHTING ONLY	\$16.60	\$5.53
	HR5.25X5.25X1.25X3/16SE	5 1/4" ---3/16 SUPER-EDGE FLIGHTING ONLY	\$14.20	\$3.37
	HR5X5X1.34X3/16C	5"---3/16 CUPPED FLIGHTING ONLY	\$15.46	\$3.23
 <u>5" CUPPED FLIGHTING MOUNTED</u>				
	SF-5X316C	5"--- 3/16 CUP FLIGHT MOUNTED IN CUSTOM LENGTHS OTHER THAN ABOVE LENGTHS	24.75'	\$7.69
 <u>7" CUPPED FLIGHTING MOUNTED</u>				
	SF-7X316C	7" --- 3/16" CUP FLIGHT MOUNTED ON TUBE. C/W STUB AND ORBIT MOTOR HOLE IN TUBE	28.82'	\$8.46

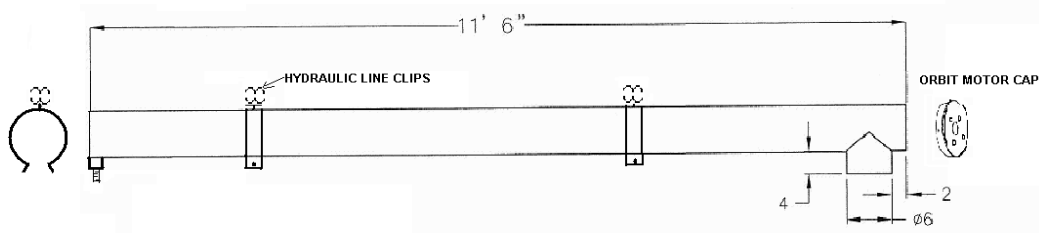
SEED & FERTILIZER REPLACEMENT TUBES

2024



BOM ALL TUBES COME WITH A 4-BOLT OR 2-BOLT ORBIT MOTOR MOUNT & DISCHARGE SPOUT WELDED ON.
(PLEASE STATE ORBIT MOTOR MOUNT HOLE PATTERN WHEN ORDERING.)

			LIST PRICE	cost x2.3
⇒	EM-6T1215GG	6" x 12' GALVANIZED 15 GA TUBE as picture	\$648.35	\$281.89
⇒	EM-6T1415GG	6" x 14' GALVANIZED 15GA TUBE as picture	\$704.44	\$306.28
⇒	EM-600TCHC	TUBE CLAMP WITH CLIPS TO HOLD HYDRAULIC LINES	\$37.01	\$16.09



(KILBROS STYLE)

NOTE: WHEN ORDERING SCREW WITH A TUBE THE SCREW LENGTH SHOULD BE 6" LONGER THAN THE TUBE.
(PLEASE STATE ORBIT MOTOR MOUNT HOLE PATTERN WHEN ORDERING.)

			LIST PRICE	cost x 2.3
⇒	EM-6T1215GGK	6" x 12' GALVANIZED 15 GA TUBE as picture DISCHARGE SPOUT, 2 HYDRAULIC LINE HOLDERS & D-SHAPED BRACKET W/BOLT	\$707.53	\$307.62
⇒	EM-6T1415GGK	6" x 14' GALVANIZED 15GA TUBE as picture DISCHARGE SPOUT, 2 HYDRAULIC LINE HOLDERS & D-SHAPED BRACKET W/BOLT	\$734.85	\$307.62

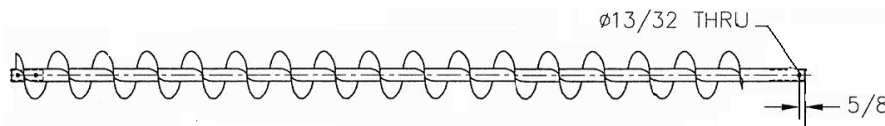
	BRISTLE SHAFTS AND FLIGHTS	LIST PRICE	cost pr ft
EM-BSF612	6" X 12' RH BRISTLE SHAFT AND FLIGHT FOR 6" TUBE	\$684.48	\$24.80
EM-BSF614	6" X 14' RH BRISTLE SHAFT AND FLIGHT FOR 6" TUBE	\$798.56	\$24.80
EM-BSF615	6" X 15' RH BRISTLE SHAFT AND FLIGHT FOR 6" TUBE	\$855.60	\$24.80
EM-BSF616	6x 16' RH BRISTLE SHAFT AND FLIGHT FOR 6" TUBE	\$912.64	\$24.80
EM-BSF620	6" X 20' RH BRISTLE SHAFT AND FLIGHT FOR 6" TUBE	\$1,140.80	\$24.80
EM-BSF621	6" X 21' RH BRISTLE SHAFT AND FLIGHT FOR 6" TUBE	\$1,197.84	\$24.80
EM-BSF6	6" RH BRISTLE FLIGHT IN OTHER LENGTHS IS	\$57.04	\$24.80
EM-BSF8	8" RH BRISTLE FLIGHT IN OTHER LENGTHS IS	\$68.08	\$29.60
EM-BSF820	8" X 20' RH BRISTLE SHAFT AND FLIGHT FOR 8" TUBE	\$1,429.68	\$29.60

304 STAINLESS STEEL AUGER FLIGHTING FOR FERTILIZER AND SEED AUGERS

2024

<u>PART#</u>	<u>5" & 5.34" FLIGHTING ONLY</u>	<u>LIST</u>	cost
SSHR5X5X1.34X18C	5" OD X 5" P X 1.34" ID X 1/8" RH CUPPED FLIGHT	\$32.02	\$13.92

SSHR5.34X5.34X1.34X18	5.34OD X 5.34" P X 1.34" ID X 1/8" RH STANDARD FLIGHT	\$34.89	\$15.17
-----------------------	---	----------------	---------



SHAFT & FLIGHT C/W 3/8" HOLE DRILLED IN ONE END & 7" OF BARE SHAFT

5" CUP



		<u>LIST</u>	cost
SSSF5X10C	10' CUPPED SHAFT & FLIGHT	\$626.18	\$251.90
SSSF5X12C	12' CUPPED SHAFT & FLIGHT	\$794.42	\$290.28
SSSF5X14C	14' CUPPED SHAFT & FLIGHT	\$841.73	\$351.16
SSSF5X16C	16' CUPPED SHAFT & FLIGHT	\$895.31	\$389.54
SSSF5X18C	18' CUPPED SHAFT & FLIGHT	\$953.40	\$427.92
SSSF5X20C	20' CUPPED SHAFT & FLIGHT	\$1,124.24	\$488.80
SSSF5X21C	21' CUPPED SHAFT & FLIGHT	\$1,168.38	\$507.99
SSSF5X26C	26' CUPPED SHAFT & FLIGHT	\$1,389.06	\$603.94
SSSF5X31C	31' CUPPED SHAFT & FLIGHT	\$1,609.75	\$699.89

5.34" STANDARD



SSSF5.34X10	10' x 5.34" SHAFT & FLIGHT	\$668.38	\$250.15
SSSF5.34X12	12' x 5.34" SHAFT & FLIGHT	\$847.50	\$288.18
SSSF5.34X14	14' x 5.34" SHAFT & FLIGHT	\$909.33	\$348.71
SSSF5.34X16	16' x 5.34" SHAFT & FLIGHT	\$971.15	\$386.74
SSSF5.34X18	18' x 5.34" SHAFT & FLIGHT	\$1,032.98	\$424.77
SSSF5.34X20	20' x 5.34" SHAFT & FLIGHT	\$1,116.19	\$485.30
SSSF5.34X21	21' X 5.34" SHAFT & FLIGHT	\$1,159.94	\$504.32

7" FLIGHTING ONLY

SSHR7X7X1.65X316	7"OD X 1.65"ID X 3/16 RH STAINLESS STEEL NON CUPPED FLIGHTING ONLY	\$53.59	\$23.30
------------------	---	----------------	---------

**5" POLY CUPPED FLIGHTING
ASSEMBLY**

2024

PART #	DESCRIPTION	LIST PRICE	cost
	5" Poly Cupped on Galvanized Steel Centre Tube per foot	\$54.45	
SA5PCSF12	5" Poly Cupped on Galvanized Hex Steel Centre Tube x 12 feet	\$600.73	\$261.19
SA5PCSF14	5" Poly Cupped on Galvanized Hex Steel Centre Tube x 14 feet	\$713.62	\$310.27
SA5PCSF16	5" Poly Cupped on Galvanized Hex Steel Centre Tube x 16 feet	\$801.21	\$348.35
SA5PCM	5" Poly Cupped Flight Module (*4.09 per inch)	\$13.48	\$5.86
SA5PCEND	5" Poly Cupped Flight END Module	\$13.48	\$5.86
SA5HTSS	Stainless Steel Centre Hex Tube per foot	\$19.28	\$7.92
SA5HTSS21	Stainless Steel Centre Hex Tube 21 ft	\$382.64	\$166.37
SA5HTSS30	Stainless Steel Centre Hex Tube 30 ft	\$492.66	\$214.20
	5" Poly Cupped on Stainless Steel Hex Centre Tube per foot	\$60.34	
SA5MDC	Motor Drive Connector – MS	\$13.46	\$5.85
SA5HCSS	5" all Hex Coupler – SS	\$19.69	\$8.56
SA5MDCSS	Motor Drive Connector –SS	\$22.25	\$9.67
SA5-58PSM	5 5/8" POLY STRAIGHT FLIGHT MODULE	\$23.74	\$7.11

**7" POLY CUPPED FLIGHTING
ASSEMBLY**

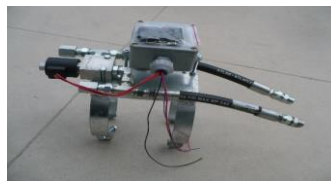
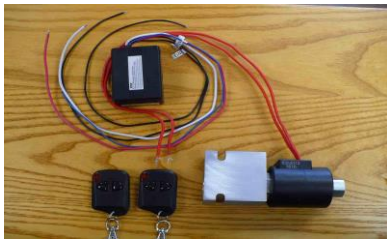
PART #	DESCRIPTION	LIST PRICE	cost
	7" Poly Cupped on Stainless Steel Centre Tube per foot	\$66.43	
SA7PCSFSS21	7" Poly Cupped flight mounted on SS Hex core x 21 ft	\$1,395.01	
SA7PCM	7" Poly Cupped Flight Module (*5.76 per inch)	\$19.69	\$8.56
SA7PCEND	7" Poly Cupped END Module	\$26.81	\$11.66
SA7HTSS21	7" Stainless Steel Centre Tube, 21 feet	\$429.76	\$186.85
SA7HC	7" Centre Hex Tube Connector	\$57.95	\$25.20



SEED AUGER ACCESSORIES & REPLACEMENT PARTS

2024

<u>PART #</u>	<u>DESCRIPTION</u>	<u>LIST</u>	cost
EM-HM6	255115F3005AAAA WHITE 6 CUBIC INCH ORBIT MOTOR C/W HOLE IN SHAFT	\$613.36	\$266.68
EM-HMMC	BHIH8888BXO MANUAL OFF/ON CONTROL FOR EM-HM6	\$191.02	\$83.05
EM-HM6VM	255115F3705AAAAA WHITE 6 CUBIC INCH ORBIT MOTOR C/W HOLE IN SHAFT (VALVE CONTROL MOUNTS ON MOTOR)	\$468.67	\$191.79
SA-200018022	REPLACEMENT O-RING FOR VALVE MOUNT UNIT	\$1.21	
EM-HMVMC	BH1D8800BXO CONTROL VALVE MOUNTS ON MOTOR FOR EM-HM6MV MOTORS	\$104.60	\$41.44
EM-HM10	255160F3005AAAAA WHITE 10 CUBIC INCH ORBIT MOTOR C/W HOLE IN SHAFT	\$637.88	\$277.34
EM-HMMC	BHIH8888BXO MANUAL OFF/ON CONTROL FOR EM-HM10	\$191.08	\$83.08
EM-HM12.5	300200F8620AAAAAB WHITE 12.5 CUBIC INCH MOTOR	\$1,384.80	\$659.43
SA-200222002B	200 222 002B SEAL KITS FOR SQUARE MOTOR	\$69.30	
SA-255222001	255 222 001 SEAL KITS FOR ROUND MOTOR	\$122.23	\$48.21
EM-HMA7623T14	350200A7623AAAAAB DANFOSS MOTOR 14 TOOTH, 2 BOLT	\$1,173.98	\$510.42
EM-HMA7620K1.25	350200A7620AAAAAB DANFOSS MOTOR KEYED 1.25", 2 BOLT	\$1,173.28	\$510.12
EM-RM0212V	WIRELESS REMOTE KIT 12 VOLT c/w 2 Remotes (Remote kit less Battery and wiring)	\$124.95	\$48.76
HFSV10-21	SOLENOID VALVE FOR REMOTE KIT	\$290.42	\$126.27



valve and remote only

complete kit ready to go on auger



EM-RMSVKIT	COMPLETE KIT WITH HYDRAULIC FITTINGS WIRELESS REMOTE KIT 12 VOLT c/w 2 Remote SOLENOID VALVE FOR REMOTE KIT (INCLUDE ALL PLUMBING AND WIRE KIT)	\$932.18	\$405.30
------------	--	-----------------	----------

EM-01T0SL	LUNDELL FREEFLO WIRELESS REMOTE ONLY W/1 KEY (Valve only all plumbing and wiring is extra)	\$714.24	\$310.54
-----------	--	-----------------	----------

SOLENOID VALVE FOR REMOTE KIT
(Remote kit less Battery and wiring)



valve and remote only

complete kit ready to go on auger

EM-01T0SL & HFSV10-21 ONLY

EM-01T0SLKIT



EM-01T0SLKIT	COMPLETE UNIT READY TO MOUNT ON AUGER WIRELESS REMOTE KIT 12 VOLT c/w 1 Remote SOLENOID VALVE FOR REMOTE KIT (INCLUDE ALL PLUMBING AND WIRE KIT)	\$1,530.77	\$665.55
--------------	---	-------------------	----------

SEED AUGER ACCESSORIES & REPLACEMENT PARTS

2024

BOM	<u>PART #</u>	<u>DESCRIPTION</u>	<u>LIST</u>	cost
	EM6125-OMPOS	OLD STYLE ORBIT MOTOR PLATES	\$61.07	\$26.55
	EM-600-OMPNS	NEW STYLE ORBIT MOTOR PLATE	\$122.71	\$53.35
⇒	EM800-FROMPNS	NEW STYLE ORBIT MOTOR PLATE	\$125.81	\$54.70
	EM-2BOMP	2-BOLT ORBIT MOTOR PLATE	\$61.07	\$26.55
	EM-PSBB176228W	SPHERICAL WOOD 1 1/16" BEARING	\$47.21	\$20.53
⇒	EM600-HD900	HEAVY DUTY BOLT ON 6" 90 DEG. OUTLET	\$263.33	\$114.49
⇒	EM800-HD900	HEAVY DUTY BOLT ON 8" 90 DEG. OUTLET	\$301.62	\$131.14
⇒	EM600-HCS-2	6" X 2" WIDE 1/2 CLAMP SET W/HARDWARE	\$50.91	\$22.14
⇒	EM600-HCS-3	6" X 3" WIDE 1/2 CLAMP SET W/HARDWARE	\$59.04	\$25.67
⇒	EM6.625-HCS-3	6 5/8" HALF CLAMP SET 3" WIDE W/HARDWARE	\$28.54	\$12.41
⇒	EM800-HCS-2	8" X 2" WIDE 1/2 CLAMP SET W/ HARDWARE	\$31.13	\$13.54
⇒	EM800-HCS-3	8" X 3" WIDE 1/2 CLAMP SET W/HARDWARE	\$59.87	\$26.03
⇒	EM8.625-HCS-3	8 5/8" HALF CLAMP SET 3" WIDE W/HARDWARE	\$34.89	\$15.17
⇒	EM-600TCHC	6" TUBE CLAMP W/HYDRAULIC LINE CLIPS	\$41.95	\$18.24
⇒	EM-800TCHC	8" TUBE CLAMP W/HYDRAULIC LINE CLIPS	\$39.19	\$17.04
	EM600-IG	6" INTAKE GUARD W/BEARING (NO HITCH)	\$469.80	\$204.26
	EM800-IG	8" INTAKE GUARD W/BEARING (NO HITCH)	\$499.56	\$217.20
	EM10150IG/WF	10" INTAKE GUARD W/BEARING (NO HITCH)	\$330.99	\$143.91
	EM-Y2000-7	HITCH FOR ABOVE INTAKE GUARDS	\$123.75	\$53.81
	EM-Y2000-7-6	INTAKE GUARD HITCH PIN	\$18.18	\$7.90
	ELM-006	1/2" HYD HOSES 25' LONG 1/2NPT MALE SOLID 1/2NPT MALE SWIVEL WITH S71-4	\$457.01	\$198.70
	S71-4	1/2" NPT MALE COUPLER ENDS S71-4 PIONEER MALE END	\$19.21	\$8.35
	S40-4	1/2" NPT MALE AND FEMALE QUICK DISCONNECT COUPLER SET	\$29.94	
	S44-4	DUST PLUG	\$5.48	
	S49-4	DUST CAP	\$5.48	
	S42-4	BREAK AWAY CLAMP	\$39.67	
	EM-Y2000-BB	BATTERY BOX FOR Y 2000	\$103.50	\$45.00
	SDR26-6	6" POLY TUBE 20' LENGTH	\$544.69	\$236.82
	SDR26-8	8" POLY TUBE 20' LENGTH	\$833.31	\$362.31

SEED AUGER ACCESSORIES & REPLACEMENT PARTS

2024

<u>PART #</u>	<u>DESCRIPTION</u>	<u>LIST</u>	cost
EM6X075GAL	6"OD X 15GA GALVANIZED TUBE	\$25.19	\$10.70
EM8X075GAL	8"OD X 15GA GALVANIZED TUBE	\$35.81	\$15.57
EM400-FP	4" BLACK PLASTIC FLEX PIPE	\$15.89	\$6.91
EM600-FP	6" BLACK PLASTIC FLEX PIPE	\$27.85	\$12.11
EM800-FP	8" BLACK PLASTIC FLEX PIPE	\$33.17	\$14.42
EM400-RF	4" RUBBER FLEX PIPE	\$25.53	\$11.10
SA6FH	6" REPLACEMENT TELESCOPIC SPOUT PLASTIC FLEX HOSE per foot	\$37.95	\$16.50
SA6FH-PKG	6" X 16" LONG REPLACEMENT TELSCOPIC SPOUT FLEX HOSE C/W 4 POP RIVETS & 4 FENDER WASHERS	\$86.36	\$37.55
SA8FH	8" REPLACEMENT TELESCOPIC SPOUT PLASTIC FLEX HOSE per foot	\$64.56	\$28.07
SA8FH-PKG	8" X 16" LONG REPLACEMENT TELSCOPIC SPOUT FLEX HOSE C/W 4 POP RIVETS & 4 FENDER WASHERS	\$107.87	\$46.90
EM400-GCHF60	4" GEAR CLAMP	\$3.04	\$1.32
EM600-GCHF96	6" GEAR CLAMP	\$4.88	\$2.12
EM800-GCHF128	8" GEAR CLAMP	\$4.44	\$1.93
SA6TBCL	6" T BOLT CLAMP FOR TELESCOPING DOWN SPOUT	\$11.75	\$5.11
SA8TBCL	8" T BOLT CLAMP FOR TELESCOPING DOWN SPOUT	\$15.99	\$6.95
SA10TBCL	10" T BOLT CLAMP FOR TELESCOPING DOWN SPOUT	\$34.16	\$14.85
EM-WB6	6" WINCH BRACKET ASSEMBLY	\$125.93	\$54.75
EM-WB8	8" WINCH BRACKET ASSEMBLY	\$106.12	\$46.14
EM-Y2000-10	HYDRAULIC HOSE HOLDER	\$105.23	\$45.75
EM-Y2000-40	SAFETY CHAIN	\$49.04	\$21.32
EM-SMV	SMV SIGN	\$11.71	\$5.09
EM600/800-PH	STANDARD PLASTIC HOPPER 5" TO 8" AUGER	\$249.23	\$108.36
EM-PHBD	BIG DADDY PLASTIC HOPPER FOR 10" AUGERS	\$273.70	\$119.00
EM-PHRS	REPLACEMENT STRAPS FOR HOPPERS	\$21.00	\$9.13
EM350/400MPH	MINI PLASTIC HOPPER 350/400 AUGERS	\$148.83	\$64.71
EM-195	6" PLASTIC CROSS AUGER HOPPER & LID ASSEMBLY W/ SAFETY GRILL	\$421.36	\$183.20
EM-196	6" PLASTIC DROPS W/ SCREWS FOR 6" CROSS AUGER	\$139.84	\$60.80
EM-197	PLASTIC SHUT OFF SLIDE FOR 6" CROSS AUGER	\$17.02	\$7.40



<u>PART #</u>	<u>DESCRIPTION</u>	<u>LIST</u>	cost
SA62S47	6" 2 STAGE TELESCOPIC DOWNSPOUT 4' - 7' w Handle	\$334.72	\$145.53
SA63S513	6" 3 STAGE TELESCOPIC DOWNSPOUT 5' - 13' w Handle	\$454.27	\$197.51
SA63S616	6" 3 STAGE TELESCOPIC DOWNSPOUT 6' 16' w/Handle	\$446.78	\$194.25
SA82S47	8" 2 STAGE TELESCOPIC DOWNSPOUT 4' - 7' w Handle	\$308.20	\$134.00
SA82S611	8" 2 STAGE TELESCOPIC DOWNSPOUT 6' - 11' w Handle	\$410.55	\$178.50
SA83S616	8" 3 STAGE TELESCOPIC DOWNSPOUT 6'-16' w Handle	\$531.30	\$231.00
SA102S611	10" 2 STAGE TELESCOPIC DOWNSPOUT 6'-11' w Handle	\$769.60	\$334.61
K1051	1400 LBS SAFETY BRAKE WINCH	\$297.80	\$129.48

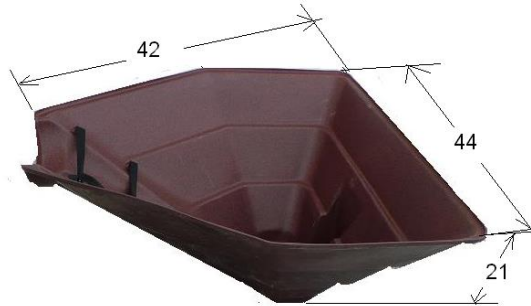
SEED AUGER ACCESSORIES & REPLACEMENT PARTS

2024

<u>PART #</u>	<u>DESCRIPTION</u>	<u>LIST</u>	<u>COST</u>
EM350/400-MPH	PLASTIC MINI HOPPER (3 1/2" - 4 " AUGERS)	\$ 148.83	\$ 64.71



EM600/800-PH	STANDARD PLASTIC HOPPER (5"-8" AUGERS)	\$ 249.23	\$ 108.36
--------------	---	-----------	-----------



EM-PHBD	BIG DADDY PLASTIC HOPPER FOR 10" AUGERS	\$ 273.70	\$ 119.00
---------	---	-----------	-----------



EM-PHRS	PLASTIC HOPPER REPLACEMENT STRAPS	\$ 21.00	\$ 9.13
---------	-----------------------------------	----------	---------



Custom Augers

FULL TILT CUPPED FLIGHTING

MADE IN CANADA 
 manufactured by Elmer's Flighting Supply Inc.

519-934-2193 info@elmersflighting.com www.elmersflighting.com



AUGERS FOR NO TILL DRILLS

AVAILABLE IN 6" OR 8" AUGER SIZE

CHOICE OF FLIGHTING:

- FULL TILT CUPPED,
- PLASTIC CUPPED,
- STAINLESS STEEL CUPPED, OR
- BRISTLE FLIGHT

For a Dealer near you, please contact **Elmer's Flighting Supply Inc.**

Phone 519-934-2193 or email info@elmersflighting.com

Website - www.elmersflighting.com

HONDA GX HYDRAULIC POWER PACK

INCLUDES OIL



PP13HPM	13 HP HONDA GX	MANUAL START	LIST PRICE	\$3,249.00	cost \$ 2,160.00
PP13HPE	13 HP HONDA GX	ELECTRIC START INCLUDES BATTERY	LIST PRICE	\$3,815.00	\$ 2,536.00

SPECIFICATIONS

PERFORMANCE

- 13 Hp HONDA engine for plenty of power in a compact package
- Oversized 5 gallon fluid reservoir
- 11 GPM hydraulic pump @ 3400 engine RPM capable of 3000 PSI with 13 H.P. input
- Designed to match auger for best efficiency
- Powers auger at ideal speed to minimize seed damage
- Electric start

CONVENIENCE

- Eliminates the need for an extra tractor
- Reversing valve for easy auger cleanout
- Quick, simple installation
- From elevator to field without hooking or unhooking

QUALITY

- Full 1-year warranty on engine
- Direct mount pump- no belts to misalign
- Extra heavy steel construction: 3/16" and 12 gauge
- Built with pride – Made in North America
- air & oil filters for long life

SAFETY

- Adjustable pressure relief valve to protect system
- 3 Position, 4 – Way detented directional control valve for forward and reverse of hydraulic motor
- 5 gallon reservoir
- Suction filter

VERSATILITY

- Can be mounted on wagon, planter, pick up or wheel
- Valve options available for powering cylinders or logsplitters
- Units available for construction, municipal and utility use

VALUE

- Frees up tractor for other uses
- Saves wear and tear on tractor
- Saves time and labour
- Built extra heavy for years of trouble free service

Also available with wireless remote control to start and stop auger.

WEB: www.elmersflighting.com

E-mail: info@elmersflighting.com

DRILL FILL KIT FOR JD 1590 NO TILL

2021

PRICING WITH FLIGHTING OPTIONS:	PART #	<u>LIST PRICE</u>	<u>LIST PRICE</u>
		6" AUGER	8" AUGER
- FULL TILT FLIGHTING	JD1590-615	\$3,135.00	
8" Not In Stock	JD1590-815		\$3,355.00
- POLY CUPPED FLIGHTING	JD1590-P615	\$3,654.20	
	JD1590-P815		\$3,958.90
- STAINLESS STEEL CUPPED FLIGHTING IN 6" ONLY	JD1590-SSC615	\$3,498.00	
- STAINLESS STEEL STANDARD FLIGHTING IN 8" ONL	JD1590-SS815		\$3,624.50
- BRISTLE FLIGHTING	JD1590-B615	\$3,262.60	
	JD1590-B815		\$3,393.50

BASIC FEATURES FOR 6" STANDARD EQUIPMENT:

- 15' AUGER LENGTH
- 5" FULL TILT CUP FLIGHT
- ON/OFF ROPE CONTROL VALVE
- POWDER COATED FRAME MOUNT WITH AUGER SWIVEL ON ROLLER BEARINGS FOR EASY MOVEMENT
- PLASTIC HOPPER SWIVEL 360 DEGREE C/W GREASEABLE OILITE BEARING IN HOPPER
- 2 STAGE TELESCOPIC SPOUT 4' - 7'
- 6 CUBIC INCH HYDRAULIC MOTOR
- 25' SET OF HYDRAULIC LINES WITH ENDS

OPTIONAL FLIGHT ON 6"

- 5" 304 S.S. CUP FLIGHT
- 5" POLY CUP FLIGHT
- 5" BRISTLE FLIGHT

BASIC FEATURES FOR 8" STANDARD EQUIPMENT:

- 15' AUGER LENGTH
- 7" FULL TILT CUP FLIGHT
- ON/OFF ROPE CONTROL VALVE
- POWDER COATED FRAME MOUNT WITH AUGER SWIVEL ON ROLLER BEARINGS FOR EASY MOVEMENT
- PLASTIC HOPPER SWIVEL 360 DEGREE C/W GREASEABLE OILITE BEARING IN HOPPER
- 2 STAGE TELESCOPIC SPOUT 6' - 11'
- 6 CUBIC INCH HYDRAULIC MOTOR
- 25' SET OF HYDRAULIC LINES WITH ENDS

OPTIONAL FLIGHT ON 8"

- 7" 304 S.S. STD FLIGHT
- 7" POLY CUP FLIGHT
- 7" BRISTLE FLIGHT

OPTIONAL HYDRAULIC CONTROL VALVE FOR TRACTORS WITH 2 REMOTES ONLY C/W HOSES & MOUNTING BRACKETS (TIES IN WITH MARKER CONTROL VALVE)

List price -- \$660.00





Custom Augers

FULL TILT CUPPED FLIGHTING

MADE IN CANADA 

manufactured by Elmers Flighting Supply Inc.

519-934-2193 info@elmersflighting.com www.elmersflighting.com



DRILL FILL AUGERS

AVAILABLE IN 6" OR 8" AUGER SIZE

CHOICE OF FLIGHTING:

- FULL TILT CUPPED,
- PLASTIC CUPPED,
- STAINLESS STEEL CUPPED, OR
- BRISTLE FLIGHT

For a Dealer near you, please contact **Elmer's Flighting Supply Inc.**
 Phone 519-934-2193 or email info@elmersflighting.com
 Website - www.elmersflighting.com

DRILL FILL KIT FOR CASE 1245 PIVOT PLANTER

PRICING WITH FLIGHTING OPTIONS:	PART #	<u>LIST PRICE</u> 6" AUGER	<u>LIST PRICE</u> 8" AUGER
- FULL TILT FLIGHTING	CIH1245-618	\$3,575.00	
8" Not In Stock	CIH1245-818		\$3,712.50
- POLY CUPPED FLIGHTING	CIH1245-P618	\$4,196.50	
	CIH1245-P818		\$4,345.00
- STAINLESS STEEL CUPPED FLIGHTING IN 6" ONLY	CIH1245-SSC618	\$4,235.00	
- STAINLESS STEEL STANDARD FLIGHTING IN 8" ONLY	CIH1245-SS818		\$4,345.00
- BRISTLE FLIGHTING	CIH1245-B618	\$4,015.00	
	CIH1245-B818		\$4,125.00

BASIC FEATURES FOR 6" STANDARD EQUIPMENT:

- 18' AUGER LENGTH
- 5" FULL TILT CUP FLIGHT
- ON/OFF ROPE CONTROL VALVE
- POWDER COATED FRAME MOUNT WITH AUGER
SWIVEL ON ROLLER BEARINGS FOR EASY MOVEMENT
- PLASTIC HOPPER SWIVEL 360 DEGREE C/W
GREASEABLE OILITE BEARING IN HOPPER
- 2 STAGE TELESCOPIC SPOUT 4' - 7'
- 6 CUBIC INCH HYDRAULIC MOTOR

OPTIONAL FLIGHT ON 6"

- 5" 304 S.S. CUP FLIGHT
- 5" POLY CUP FLIGHT
- 5" BRISTLE FLIGHT

BASIC FEATURES FOR 8" STANDARD EQUIPMENT:

- 18' AUGER LENGTH
- 7" FULL TILT CUP FLIGHT
- ON/OFF ROPE CONTROL VALVE
- POWDER COATED FRAME MOUNT WITH AUGER
SWIVEL ON ROLLER BEARINGS FOR EASY MOVEMENT
- PLASTIC HOPPER SWIVEL 360 DEGREE C/W
GREASEABLE OILITE BEARING IN HOPPER
- 2 STAGE TELESCOPIC SPOUT 6' - 11'
- 6 CUBIC INCH HYDRAULIC MOTOR

OPTIONAL FLIGHT ON 8"

- 7" 304 S.S. STD FLIGHT
- 7" POLY CUP FLIGHT
- 7" BRISTLE FLIGHT

44' HYDRAULIC LINES ARE EXTRA



DRILL FILL AUGERS

AVAILABLE IN 6" OR 8" AUGER SIZE

CHOICE OF FLIGHTING:

- FULL TILT CUPPED,
- PLASTIC CUPPED,
- STAINLESS STEEL CUPPED, OR
- BRISTLE FLIGHT

For a Dealer near you, please contact **Elmer's Flighting Supply Inc.**
Phone 519-934-2193 or email info@elmersflighting.com
Website - www.elmersflighting.com

DRILL FILL KIT FOR NH P2085 & CASE 500T

2021

PRICING WITH FLIGHTING OPTIONS:	PART #	<u>LIST PRICE</u>	<u>LIST PRICE</u>
		6" AUGER	8" AUGER
- FULL TILT FLIGHTING	NH2085-615	\$4,235.00	
8" Not In Stock	NH2085-815		\$4,565.00
- POLY CUPPED FLIGHTING	NH2085-P615	\$4,626.60	
	NH2085-P815		\$5,000.60
- STAINLESS STEEL CUPPED FLIGHTING IN 6" ONLY	NH2085-SSC615	\$4,779.50	
- STAINLESS STEEL STANDARD FLIGHTING IN 8" ONLY	NH2085-SS815		\$4,800.40
- BRISTLE FLIGHTING		\$4,510.00	
			\$4,866.40

BASIC FEATURES FOR 6" STANDARD EQUIPMENT:

OPTIONAL FLIGHT ON 6"

- 15' AUGER LENGTH
- 5" FULL TILT CUP FLIGHT
- ON/OFF ROPE CONTROL VALVE
- POWDER COATED FRAME MOUNT WITH AUGER SWIVEL ON ROLLER BEARINGS FOR EASY MOVEMENT
- PLASTIC HOPPER SWIVEL 360 DEGREE C/W GREASEABLE OILITE BEARING IN HOPPER
- 2 STAGE TELESCOPIC SPOUT 4' - 7'
- 6 CUBIC INCH HYDRAULIC MOTOR

- 5" 304 S.S. CUP FLIGHT
- 5" POLY CUP FLIGHT
- 5" BRISTLE FLIGHT

BASIC FEATURES FOR 8" STANDARD EQUIPMENT:

OPTIONAL FLIGHT ON 8"

- 15' AUGER LENGTH
- 7" FULL TILT CUP FLIGHT
- ON/OFF ROPE CONTROL VALVE
- POWDER COATED FRAME MOUNT WITH AUGER SWIVEL ON ROLLER BEARINGS FOR EASY MOVEMENT
- PLASTIC HOPPER SWIVEL 360 DEGREE C/W GREASEABLE OILITE BEARING IN HOPPER
- 2 STAGE TELESCOPIC SPOUT 6' - 11'
- 6 CUBIC INCH HYDRAULIC MOTOR

- 7" 304 S.S. STD FLIGHT
- 7" POLY CUP FLIGHT
- 7" BRISTLE FLIGHT

HYDRAULIC LINES ARE EXTRA