

Home of the New

SUPER-EDGETM



Elmer's Flighting Supply Inc.

R.R. # 2 7635 HWY 21 ALLENFORD, ONTARIO, CANADA N0H 1A0
TEL: 519-934-2193 FAX: 519-934-2361

2024 SEED & FERTILIZER

PRODUCT CATALOGUE

Visit us on the web

WEB www.elmersflighting.com

E-mail info@elmersflighting.com

INDEX

	ELMER'S COVER SHEET	PG. 1
	ELMER'S INDEX	PG. 2
	Y2000 CATALOGUE SHEET	PG. 3
EM-Y2000B 6"	HYDRAULIC TRANSPORT AUGERS LIST - 20%	PG. 4
EM-Y2000B 8"	HYDRAULIC TRANSPORT AUGERS LIST - 20 %	PG. 5
EM-Y2000 10"	HYDRAULIC TRANSPORT AUGER LIST - 20%	PG. 6
	GRAVITY BOX AUGER CATALOGUE SHEET	PG. 7
EM-G.B. 12'14'	GRAVITY BOX AUGERS LIST - 20 %	PG. 8-9
EM-S&F	SEED & FERTILIZER SHAFT & FLIGHTING LIST - 25%	PG. 10
EM-RT	SEED & FERTILIZER REPLACEMENT TUBES & BRISTLE FLIGHT LIST - 25%	PG. 11
EM-SSS&F	STAINLESS STEEL SHAFTS & FLIGHTS LIST - 25 %	PG. 12
	POLY CUP FLIGHTING 5" & 7" LIST - 25 %	PG. 13
EM-ACC.	SEED AUGER ACCESSORIES LIST - 25 %	PG. 14-16
	SEED AUGER ACCESSORIES /REPLACEMENT PARTS	PG. 17

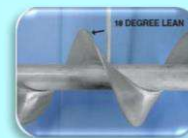


STANDARD FEATURES:

- ☐ 6" X 21', 6" X 26', 6" X 31', 8" X 21', 8" X 26', 8" X 31', 10" X 31'
- ☐ 3/16" FULL TILT CUPPED FLIGHTING
- ☐ 6" OD X 14GA OR 8" OD X 14GA GALVANIZED TUBE
- ☐ HYDRAULIC ORBIT MOTOR (size of motor based on size of auger)
- ☐ BEARING AT BOTTOM OF INTAKE GUARD
- ☐ 3 STAGE TELESCOPIC DOWNSPOUT – 6" MODEL ONLY
- ☐ (Optional telescopic downspout available on 8")
- ☐ POWDER COATED UNDERCARRIAGE
- ☐ PLASTIC HOPPER
- ☐ TOW HITCH (REMOVEABLE)
- ☐ 15" HIGH SPEED WHEELS WITH HEAVY DUTY UNDER CARRIAGE
- ☐ SAFETY BRAKE WINCH

OPTIONAL EQUIPMENT:

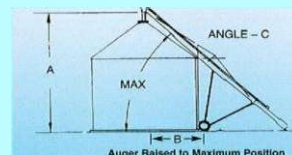
- ☐ HYDRAULIC LINE HOSE HOLDER
- ☐ SLOW MOVING VEHICLE SIGN
- ☐ SAFETY CHAIN
- ☐ 12 VOLT ELECTRIC SOLENOID WITH WIRELESS REMOTE CONTROL
- ☐ STAINLESS STEEL FULL TILT CUPPED FLIGHTING
- ☐ POLY CUPPED FLIGHTING



"FULL TILT CUPPED FLIGHT"

ADJUSTABLE HEIGHT:

21'	26'	31'
A 12'	A 15'6"	A 16' ½"
B 5' 8"	B 7' 6"	B 10'
C 37 deg.	C 40 deg.	C 30 deg.



6" Y2000 TRANSPORT AUGER

2024

<u>PART #</u>		<u>BASIC MODEL</u>	<u>LIST PRICE</u>
EM-Y2000621B	6" X 21'	HYDRAULIC TRANSPORT AUGER WITH CUPPED FLIGHTING & MANUAL CONTROL	\$5,249.00
EM-Y2000626B	6" X 26'	HYDRAULIC TRANSPORT AUGER WITH CUPPED FLIGHTING & MANUAL CONTROL	\$5,995.00
EM-Y2000631B	6" X 31'	HYDRAULIC TRANSPORT AUGER WITH CUPPED FLIGHTING & MANUAL CONTROL	\$6,275.00

BASIC FEATURES included in price:

· 6" OD X 15GA GALVANIZED TUBE	· ON/OFF CONTROL VALVE W/ ROPE CONTROL
· 5" OD X 3/16" FULL TILT CUPPED FLIGHTING	· 1400 LBS BRAKE WINCH ASSEMBLY
· 6 CUBIC INCH WHITE ORBIT MOTOR ON 21' MODEL	· 3-STAGE TELESCOPING DOWNSPOUT 5'-13'
· 10 CUBIC INCH WHITE ORBIT MOTOR ON 26'&31' MODEL	· HIGH SPEED 15" WHEELS, W/NEW TIRES
· BEARING AT BOTTOM OF INTAKE GUARD	· PLASTIC HOPPER

OPTIONAL STAINLESS SHAFT & FLIGHT:

2024

SSSF621	6 X 21	STAINLESS STEEL CUPPED SHAFT & FLIGHT	(ADD)	\$877.99
SSSF626	6 X 26	STAINLESS STEEL CUPPED SHAFT & FLIGHT	(ADD)	\$1,134.50
SSSF631	6 X 31	STAINLESS STEEL CUPPED SHAFT & FLIGHT	(ADD)	\$1,336.00

OPTIONAL PLASTIC POLY CUP ON STAINLESS HEX SHAFT:

SA5PCSFSS21	6 X 21	POLY CUPPED ON STAINLESS STEEL HEX CORE	(ADD)	\$877.99
SA5PCSFSS26	6 X 26	POLY CUPPED ON STAINLESS STEEL HEX CORE	(ADD)	\$1,134.50
SA5PCSFSS31	6 X 31	POLY CUPPED ON STAINLESS STEEL HEX CORE	(ADD)	\$1,336.00

OPTIONAL EQUIPMENT

2023

ELM-006	1/2" HYD HOSES 25' LONG 1/2NPT MALE SOLID 1/2NPT MALE SWIVEL w/ S71-4	\$457.01
EM-Y2000-10	1 HYDRAULIC HOSE HOLDER	\$105.23
EM-Y2000-40	1 SAFETY CHAIN & HOOK	\$49.04
EM-SMV	1 SMV SIGN	\$11.71
SA62S47	6" 2 STAGE TELESCOPIC DOWNSPOUT 4' - 7' w Handle	\$193.20

1 ALL BRACKETS , CHANNELS & ACCESSORIES ARE WELDED TO THE TUBE AND ARE NOT REMOVEABLE

1 ONTARIO STEWARDSHIP TIRE TAX OF \$4.25 PER TIRE WILL BE CHARGED ON ALL Y2000 AUGERS

ALL STAINLESS STEEL TUBE AND SCREW

2024

<u>PART #</u>		<u>LIST PRICE</u>
EM-Y2000621SS	6" X 21' 304 SS HYDRAULIC TRANSPORT AUGER WITH CUPPED FLIGHTING, MANUAL CONTROL AND STAINLESS INTAKE GUARD	\$8,600.00
EM-Y2000626SS	6" X 26' 304 SS HYDRAULIC TRANSPORT AUGER WITH CUPPED FLIGHTING, MANUAL CONTROL AND STAINLESS INTAKE GUARD	\$8,795.00
EM-Y2000631SS	6" X 31' 304 SS HYDRAULIC TRANSPORT AUGER WITH CUPPED FLIGHTING, MANUAL CONTROL AND STAINLESS INTAKE GUARD	\$9,225.00

8" Y2000 TRANSPORT AUGER

2024

<u>PART #</u>		<u>BASIC MODEL</u>	<u>LIST PRICE</u>
EM-Y2000821B	8" X 21'	HYDRAULIC TRANSPORT AUGER WITH CUPPED FLIGHTING & MANUAL CONTROL	\$6,275.00
EM-Y2000826B	8" X 26'	HYDRAULIC TRANSPORT AUGER WITH CUPPED FLIGHTING & MANUAL CONTROL	\$6,898.00
EM-Y2000831B	8" X 31'	HYDRAULIC TRANSPORT AUGER WITH CUPPED FLIGHTING & MANUAL CONTROL	\$7,139.00

BASIC FEATURES included in price:

· 8" OD X 15GA GALVANIZED TUBE	· 1400 LBS BRAKE WINCH ASSEMBLY
· 7" OD X 3/16" FULL TILT CUPPED FLIGHTING	· HIGH SPEED 15" WHEELS, W/NEW TIRES
· 10 CUBIC INCH WHITE ORBIT MOTOR	· PLASTIC HOPPER
· BEARING AT BOTTOM OF INTAKE GUARD	· TELESCOPIC DOWNSPOUT NOT INCLUDED
· ON/OFF CONTROL VALVE W/ ROPE CONTROL	

OPTIONAL STAINLESS SHAFT & FLIGHT:

2024

SSSF821	8 X 21	STAINLESS STEEL NON CUPPED SHAFT & FLIGHT	(ADD)	\$1,443.83
SSSF826	8 X 26	STAINLESS STEEL NON CUPPED SHAFT & FLIGHT	(ADD)	\$1,863.73
SSSF831	8 X 31	STAINLESS STEEL NON CUPPED SHAFT & FLIGHT	(ADD)	\$2,187.97

OPTIONAL PLASTIC POLY CUP ON STAINLESS HEX SHAFT:

SA7PCSFSS21	8 X 21	POLY CUPPED ON STAINLESS STEEL HEX CORE	(ADD)	\$1,443.83
SA7PCSFSS26	8 X 26	POLY CUPPED ON STAINLESS STEEL HEX CORE	(ADD)	\$1,863.73
SA7PCSFSS31	8 X 31	POLY CUPPED ON STAINLESS STEEL HEX CORE	(ADD)	\$2,187.97

OPTIONAL EQUIPMENT

2024

SA82S611	8" 2 STAGE TELESCOPIC DOWNSPOUT	6' - 11' w Handle	\$344.15
SA83S616	8" 3 STAGE TELESCOPIC DOWNSPOUT	6'-16' w Handle	\$344.15
EM-Y2000-10	1 HYDRAULIC HOSE HOLDER		\$105.23
EM-Y2000-40	1 SAFETY CHAIN & HOOK		\$49.04
EM-SMV	1 SMV SIGN		\$11.71
ELM-006	1/2" HYD HOSES 25' LONG 1/2NPT MALE SOLID 1/2NPT MALE SWIVEL WITH S71-4 1 ALL BRACKETS , CHANNELS & ACCESSORIES ARE WELDED TO THE TUBE AND ARE NOT REMOVEABLE		\$457.01
	1 ONTARIO STEWARDSHIP TIRE TAX OF \$4.25 PER TIRE WILL BE CHARGED ON ALL Y2000 AUGERS		

ALL STAINLESS STEEL TUBE AND SCREW

<u>PART #</u>		<u>LIST PRICE</u>
EM-Y2000821SS	8" X 21' 304 SS HYDRAULIC TRANSPORT AUGER WITH NON CUPPED FLIGHTING, MANUAL CONTROL AND STAINLESS INTAKE GUARD	\$8,945.00
EM-Y2000826SS	8" X 26' 304 SS HYDRAULIC TRANSPORT AUGER WITH NON CUPPED FLIGHTING, MANUAL CONTROL AND STAINLESS INTAKE GUARD	\$9,898.00
EM-Y2000831SS	8" X 31' 304 SS HYDRAULIC TRANSPORT AUGER WITH NON CUPPED FLIGHTING, MANUAL CONTROL AND STAINLESS INTAKE GUARD	\$10,198.00

10" Y2000 TRANSPORT AUGER

2024

PART #

LIST PRICE

EM-Y20001031	10" x 31'	HYDRAULIC TRANSPORT AUGER WITH CUPPED FLIGHTING & MANUAL CONTROL	\$10,997.00
--------------	-----------	---	-------------

STANDARD FEATURES:

- 31' IN LENGTH
- 10" OD X 14 GA GALVANIZED TUBE
- 9" OD X 3/16" FULL TILT CUPPED FLIGHTING
- 12.5 CUBIC INCH WHITE ORBIT MOTOR
- BEARING AT BOTTOM OF INTAKE GUARD
- ON/OFF CONTROL VALVE
- 1400 LBS. BRAKE WINCH ASSEMBLY
- HYDRAULIC HOSE HOLDER
- HIGH SPEED 15" WHEELS, W/NEW TIRES
- BIG DADDY PLASTIC HOPPER
- SAFETY CHAIN
- SMV SIGN

NOTE: 3/4" HYDRAULIC LINES ARE REQUIRED ON THIS UNIT

OPTIONAL STAINLESS SHAFT & FLIGHT: 10 X 31

LIST PRICE

SSSF1031	STAINLESS STEEL SHAFT & FLIGHT (NON CUPPED)	(ADD)	\$3,450.00
----------	---	-------	------------

OPTIONAL DOWNSPOUT

LIST PRICE

SA102S611	10" 2 STAGE TELESCOPIC DOWNSPOUT	6'-11' w Handle	\$769.60
-----------	----------------------------------	-----------------	----------

ALL STAINLESS STEEL TUBE AND SCREW

LIST PRICE

EM-Y20001031SS	10" X 31'	304 SS HYDRAULIC TRANSPORT AUGER WITH NON CUPPED FLIGHTING, MANUAL CONTROL AND STAINLESS INTAKE GUARD	\$14,989.00
----------------	-----------	--	-------------

1 ALL BRACKETS , CHANNELS & ACCESSORIES ARE WELDED
TO THE TUBE AND ARE NOT REMOVEABLE

1 ONTARIO STEWARDSHIP TIRE TAX OF \$4.25 PER TIRE
WILL BE CHARGED ON ALL Y2000 AUGERS



Custom Augers
FULL TILT CUPPED FLIGHTING
 MADE IN CANADA
 manufactured by Elmers Flighting Supply Inc.

519-934-2193 info@elmersflighting.com www.elmersflighting.com

12', 14' & 15' SEED & FERTILIZER AUGERS FOR GRAVITY BOXES



STANDARD FEATURES:

- 6" OD X 14 GA GALVANIZED TUBE
- 5" OD X 3/16" STEEL FULL TILT CUPPED FLIGHTING STANDARD
- 6 CUBIC INCH WHITE ORBIT MOTOR W/HOLE IN SHAFT, 4 BOLT MOUNT
- WOOD BEARING AT BOTTOM
- ON/OFF SWITCH
- 650 LBS SAFETY BRAKE WINCH
- CABLE & PULLEY
- HYDRAULIC LINE HOSE HOLDER
- HOPPER & AUTO LOCK CRADLE
- 3' PLASTIC FLEX PIPE (OPTION EQUIPMENT – 2 OR 3 STAGE TELESCOPIC DOWNSPOUT)
(8" X 14" model available. Consult office for pricing)
- REMOVABLE END CAP FOR CLEAN OUT
- STANDARD HOPPER WILL FIT DOOR OPENINGS OF 35" OR LESS FOR WIDER DOORS CONSULT OFFICE FOR LARGER HOPPERS
- PARKER & DEMCO BOXES MAY REQUIRE LARGER HOPPERS
- WHEN MOUNTING ON A DEMCO BOX, SOME WELDING IS REQUIRED.

OPTIONAL FLIGHTING AVAILABLE IN:

- FULL TILT STAINLESS STEEL CUPPED
- PLASTIC CUPPED
- OR BRISTLE FLIGHT



"Full Tilt Cupped Flite"

NOTE: HYDRAULIC LINE FROM AUGER TO TRACTOR IS NOT SUPPLIED.

8" Model/Box must be securely fastened to under carriage and counterweights may be needed on other side of box.

PHONE: 519-934-2193

FAX: 519-934-2361

info@elmersflighting.com

www.elmersflighting.com

6" GRAVITY BOX MOUNT AUGER KITS

2024

<u>PART #</u>		<u>MODEL</u>	<u>LIST PRICE</u>
EM-GB612	6" X 12'	GRAVITY BOX MOUNT SEED AND FERTILIZER AUGER KIT	\$2,979.00
EM-GB614	6" X 14'	GRAVITY BOX MOUNT SEED AND FERTILIZER AUGER KIT	\$3,039.00
EM-GB615	6" X 15'	GRAVITY BOX MOUNT SEED AND FERTILIZER AUGER KIT	\$3,139.00

STANDARD FEATURES:

- 6" OD X 14GA GALVANIZED TUBE
 - 5" OD X 3/16" FULL TILT CUPPED FLIGHTING
 - 6 CUBIC INCH WHITE ORBIT MOTOR
 - NYLON 1 1/16" BEARING AT BOTTOM
 - ON/OFF CONTROL VALVE
 - 1400 LBS BRAKE WINCH ASSEMBLY
 - SAFETY CABLE AND PULLEY
 - AUTO LATCH CRADLE AND HOPPER
 - 3' OF RUBBERIZED FLEX PIPE
 - REMOVABLE CLEAN OUT CAP AT BOTTOM
 - HYDRAULIC HOSE HOLDER
 - STANDARD HOPPER WILL FIT DOOR OPENINGS OF 35" OR LESS
- BOXES WITH A LARGER DOOR CONSULT OFFICE FOR LARGER HOPPERS.

OPTIONAL STAINLESS SHAFT & FLIGHT

SSSFGB612	6" X 12'	STAINLESS STEEL CUPPED SHAFT & FLIGHT	(ADD)	\$663.45
SSSFGB614	6" X 14'	STAINLESS STEEL CUPPED SHAFT & FLIGHT	(ADD)	\$742.68
SSSFGB615	6" X 15'	STAINLESS STEEL CUPPED SHAFT & FLIGHT	(ADD)	\$782.30

OPTIONAL PLASTIC POLY CUP ON GALVANIZED HEX SHAFT

SA5PCSF12	6" X 12'	POLY CUPPED ON GALV. HEX STEEL CENTRE TUBE	(ADD)	\$663.45
SA5PCSF14	6" X 14'	POLY CUPPED ON GALV. HEX STEEL CENTRE TUBE	(ADD)	\$742.68
SA5PCSF15	6" X 15'	POLY CUPPED ON GALV. HEX STEEL CENTRE TUBE	(ADD)	\$782.30

OPTIONAL EQUIPMENT

ELM-006	1/2" HYD HOSES 25' LONG 1/2NPT MALE SOLID 1/2NPT MALE SWIVEL SET WITH S71-4	\$457.01
SA62S47	6" 2 STAGE TELESCOPIC DOWNSPOUT 4' - 7' w Handle	\$193.20
SA63S513	6" 3 STAGE TELESCOPIC DOWNSPOUT 5' - 13' w Handle	\$422.05
SA63S616	6" 3 STAGE TELESCOPIC DOWNSPOUT 6' - 16' w Handle	\$365.65

NOTE:

- PARKER AND DEMCO BOXES MAY REQUIRE LARGER HOPPERS
- WHEN MOUNTING ON A DEMCO BOX SOME WELDING IS REQUIRED

ALL STAINLESS STEEL TUBE, SCREW AND HOPPER

(INCLUDES ALL ACC'S AS MILD STEEL)

<u>PART #</u>		<u>MODEL</u>	<u>LIST PRICE</u>
EM-GB612SS	6" X 12'	ALL STAINLESS GRAVITY BOX MOUNT SEED AND FERTILIZER AUGER KIT	\$4,905.39
EM-GB614SS	6" X 14'	ALL STAINLESS GRAVITY BOX MOUNT SEED AND FERTILIZER AUGER KIT	\$5,083.83
EM-GB615SS	6" X 15'	ALL STAINLESS GRAVITY BOX MOUNT SEED AND FERTILIZER AUGER KIT	\$5,172.84

8" GRAVITY BOX MOUNT AUGER KITS

2024

<u>PART #</u>	<u>MODEL</u>	<u>LIST PRICE</u>
EM-GB814	8" x 14' GRAVITY BOX MOUNT SEED AND FERTILIZER AUGER KIT	\$4,691.08

STANDARD FEATURES:

- 8" OD X 14' X 14GA GALVANIZED TUBE
- 7" OD X 3/16" FULL TILT CUPPED FLIGHTING
- 6 CUBIC INCH WHITE ORBIT MOTOR
- * NYLON 1 1/6" BEARING AT BOTTOM
- ON/OFF CONTROL VALVE
- 1400LBS BRAKE WINCH ASSEMBLY
- SAFETY CABLE AND PULLEY
- AUTO LATCH CRADLE AND HOPPER
- 3' OF RUBBER FLEX PIPE
- REMOVABLE CLEAN OUT CAP AT BOTTOM
- HYDRAULIC HOSE HOLDER
- STANDARD HOPPER WILL FIT DOOR OPENINGS OF 35" OR LESS.
BOXES WITH A LARGER DOOR CONSULT OFFICE FOR LARGER HOPPERS.

OPTIONAL STAINLESS SHAFT & FLIGHT

SSSFGB814	14' STAINLESS STEEL SHAFT & FLIGHT	NON CUPPED	(ADD)	\$994.34
-----------	------------------------------------	------------	-------	----------

OPTIONAL PLASTIC POLY CUP ON STAINLESS HEX SHAFT

SA7PCSFSS14	14' POLY CUPPED ON STAINLESS STEEL HEX CORE	(ADD)	\$994.34
-------------	---	-------	----------

OPTIONAL EQUIPMENT

ELM-006	1/2" HYD HOSES 25' LONG 1/2NPT MALE SOLID 1/2NPT MALE SWIVEL SET WITH S71-4	\$457.01
SA82S611	8" 2 STAGE TELESCOPIC DOWNSPOUT 6' - 11' w Handle	\$344.15
SA83S616	8" 3 STAGE TELESCOPIC DOWNSPOUT 6'-16' w Handle	\$344.15

NOTE: 1 PARKER AND DEMCO BOXES MAY REQUIRE LARGER HOPPERS
1 WHEN MOUNTING ON A DEMCO BOX SOME WELDING IS REQUIRED

ALL STAINLESS STEEL TUBE, SCREW AND HOPPER

(INCLUDES ALL ACC'S AS MILD STEEL)

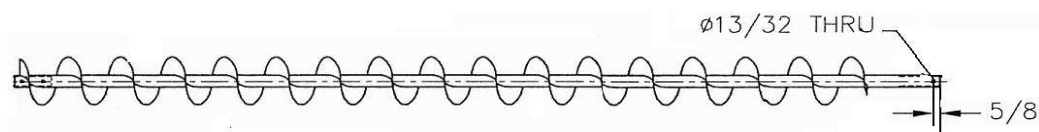
<u>PART #</u>	<u>MODEL</u>	<u>LIST PRICE</u>
EM-GB814SS	8" x 14' ALL STAINLESS GRAVITY BOX MOUNT SEED AND FERTILIZER AUGER KIT NON CUPPED	\$7,171.86

SEED & FERTILIZER AUGER SHAFTS & FLIGHTS

2024

FLIGHTING MOUNTED ON 1 5/16" X .120 WALL TUBE

AUGER C/W 3/8" HOLE DRILLED BACK 5/8" FROM END, 7" BARE SHAFT AT END



13/32" HOLE, 5/8" FROM END

<u>PART#</u>	<u>5" SUPER-EDGE AUGER</u>	<u>LIST PRICE</u>
SF-5X13410SE	10' AUGER	\$264.32
SF-5X13412SE	12' AUGER	\$296.49
SF-5X13414SE	14' AUGER	\$363.15
SF-5X13416SE	16' AUGER	\$395.30
SF-5X13418SE	18' AUGER	\$479.23
SF-5X13420SE	20' AUGER	\$511.38
SF-5X13421SES	21' AUGER W/ 1" STUB	\$571.44

5 1/4" SUPER-EDGE AUGER

SF-525X12510SE	10' AUGER	\$240.60
SF-525X12512SE	12' AUGER	\$282.40
SF-525X12514SE	14' AUGER	\$304.21
SF-525X12516SE	16' AUGER	\$375.30
SF-525X12518SE	18' AUGER	\$397.11
SF-525X12520SE	20' AUGER	\$418.91
SF-525X12521SES	21' AUGER W/ 1" STUB	\$482.93

5" CUPPED FLIGHT

SF-5X13410C	10' AUGER	\$246.93
SF-5X13412C	12' AUGER	\$289.99
SF-5X13414C	14' AUGER	\$313.06
SF-5X13416C	16' AUGER	\$385.42
SF-5X13418C	18' AUGER	\$408.50
SF-5X13420C	20' AUGER	\$431.56
SF-5X13421CS	21' AUGER W/ 1" STUB	\$476.26
SF-5X13426CS	26' AUGER W/ 1" STUB	\$555.69
SF-5X13431CS	31' AUGER W/ 1" STUB	\$635.36

FLIGHTING ONLY

HR5X5X1.34X3/16SE	5"---3/16 SUPER-EDGE FLIGHTING ONLY	\$16.60
HR5.25X5.25X1.25X3/16SE	5 1/4" ---3/16 SUPER-EDGE FLIGHTING ONLY	\$14.20
HR5X5X1.34X3/16C	5"---3/16 CUPPED FLIGHTING ONLY	\$15.46

5" CUPPED FLIGHTING MOUNTED

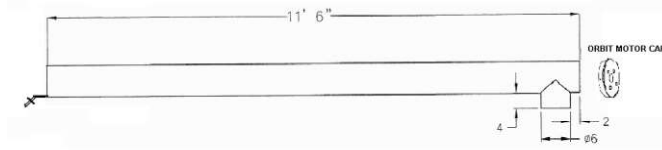
SF-5X316C	5"--- 3/16 CUP FLIGHT MOUNTED IN CUSTOM LENGTHS OTHER THAN ABOVE LENGTHS	24.75'
-----------	---	--------

7" CUPPED FLIGHTING MOUNTED

SF-7X316C	7" --- 3/16" CUP FLIGHT MOUNTED ON TUBE. C/W STUB AND ORBIT MOTOR HOLE IN TUBE	28.82'
-----------	---	--------

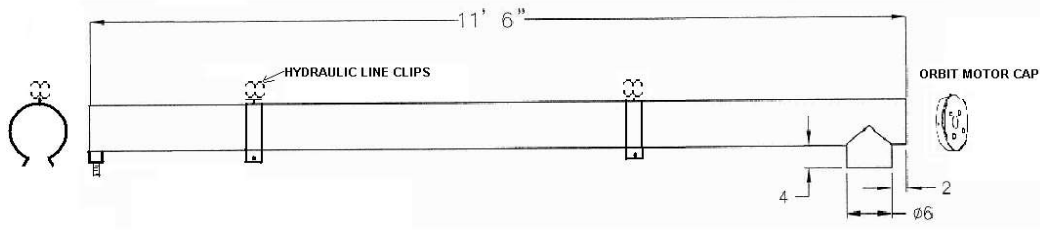
SEED & FERTILIZER REPLACEMENT TUBES

2024



ALL TUBES COME WITH A 4-BOLT OR 2-BOLT ORBIT MOTOR MOUNT & DISCHARGE SPOUT WELDED ON.
(PLEASE STATE ORBIT MOTOR MOUNT HOLE PATTERN WHEN ORDERING.)

		LIST PRICE
EM-6T1215GG	6" x 12' GALVANIZED 15 GA TUBE as picture	\$648.35
EM-6T1415GG	6" x 14' GALVANIZED 15GA TUBE as picture	\$704.44
EM-600TCHC	TUBE CLAMP WITH CLIPS TO HOLD HYDRAULIC LINES	\$37.01



(KILBROS STYLE)

NOTE: WHEN ORDERING SCREW WITH A TUBE THE SCREW LENGTH SHOULD BE 6" LONGER THAN THE TUBE.
(PLEASE STATE ORBIT MOTOR MOUNT HOLE PATTERN WHEN ORDERING.)

		LIST PRICE
EM-6T1215GGK	6" x 12' GALVANIZED 15 GA TUBE as picture DISCHARGE SPOUT, 2 HYDRAULIC LINE HOLDERS & D-SHAPED BRACKET W/BOLT	\$707.53
EM-6T1415GGK	6" x 14' GALVANIZED 15GA TUBE as picture DISCHARGE SPOUT, 2 HYDRAULIC LINE HOLDERS & D-SHAPED BRACKET W/BOLT	\$734.85

BRISTLE SHAFTS AND FLIGHTS

LIST PRICE

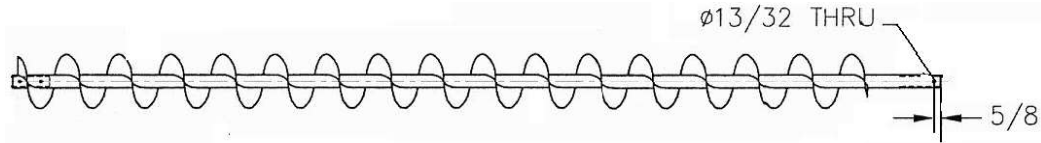
EM-BSF612	6" X 12'	RH BRISTLE SHAFT AND FLIGHT FOR 6" TUBE	\$684.48
EM-BSF614	6" X 14'	RH BRISTLE SHAFT AND FLIGHT FOR 6" TUBE	\$798.56
EM-BSF615	6" X 15'	RH BRISTLE SHAFT AND FLIGHT FOR 6" TUBE	\$855.60
EM-BSF616	6x 16'	RH BRISTLE SHAFT AND FLIGHT FOR 6" TUBE	\$912.64
EM-BSF620	6" X 20'	RH BRISTLE SHAFT AND FLIGHT FOR 6" TUBE	\$1,140.80
EM-BSF621	6" X 21'	RH BRISTLE SHAFT AND FLIGHT FOR 6" TUBE	\$1,197.84
EM-BSF6	6"	RH BRISTLE FLIGHT IN OTHER LENGTHS IS	\$57.04
EM-BSF8	8"	RH BRISTLE FLIGHT IN OTHER LENGTHS IS	\$68.08
EM-BSF820	8" X 20'	RH BRISTLE SHAFT AND FLIGHT FOR 8" TUBE	\$1,429.68

304 STAINLESS STEEL AUGER FLIGHTING FOR FERTILIZER AND SEED AUGERS

2024

<u>PART#</u>	<u>5" & 5.34" FLIGHTING ONLY</u>	<u>LIST</u>
SSHR5X5X1.34X18C	5" OD X 5" P X 1.34" ID X 1/8" RH CUPPED FLIGHT	\$32.02

SSHR5.34X5.34X1.34X18	5.34OD X 5.34"P X 1.34" ID X 1/8" RH STANDARD FLIGHT	\$34.89
-----------------------	--	---------



SHAFT & FLIGHT C/W 3/8" HOLE DRILLED IN ONE END & 7" OF BARE SHAFT

5" CUP

		LIST
SSSF5X10C	10' CUPPED SHAFT & FLIGHT	\$626.18
SSSF5X12C	12' CUPPED SHAFT & FLIGHT	\$794.42
SSSF5X14C	14' CUPPED SHAFT & FLIGHT	\$841.73
SSSF5X16C	16' CUPPED SHAFT & FLIGHT	\$895.31
SSSF5X18C	18' CUPPED SHAFT & FLIGHT	\$953.40
SSSF5X20C	20' CUPPED SHAFT & FLIGHT	\$1,124.24
SSSF5X21C	21' CUPPED SHAFT & FLIGHT	\$1,168.38
SSSF5X26C	26' CUPPED SHAFT & FLIGHT	\$1,389.06
SSSF5X31C	31' CUPPED SHAFT & FLIGHT	\$1,609.75

5.34" STANDARD

SSSF5.34X10	10' x 5.34" SHAFT & FLIGHT	\$668.38
SSSF5.34X12	12' x 5.34" SHAFT & FLIGHT	\$847.50
SSSF5.34X14	14' x 5.34" SHAFT & FLIGHT	\$909.33
SSSF5.34X16	16' x 5.34" SHAFT & FLIGHT	\$971.15
SSSF5.34X18	18' x 5.34" SHAFT & FLIGHT	\$1,032.98
SSSF5.34X20	20' x 5.34" SHAFT & FLIGHT	\$1,116.19
SSSF5.34X21	21' X 5.34" SHAFT & FLIGHT	\$1,159.94

7" FLIGHTING ONLY

SSHR7X7X1.65X316	7"OD X 1.65"ID X 3/16 RH STAINLESS STEEL NON CUPPED FLIGHTING ONLY	\$53.59
------------------	---	---------

5" POLY CUPPED FLIGHTING ASSEMBLY

2024

PART #	DESCRIPTION	LIST PRICE
	5" Poly Cupped on Galvanized Steel Centre Tube per foot	\$54.45
SA5PCSF12	5" Poly Cupped on Galvanized Hex Steel Centre Tube x 12 feet	\$600.73
SA5PCSF14	5" Poly Cupped on Galvanized Hex Steel Centre Tube x 14 feet	\$713.62
SA5PCSF16	5" Poly Cupped on Galvanized Hex Steel Centre Tube x 16 feet	\$801.21
SA5PCM	5" Poly Cupped Flight Module (*4.09 per inch)	\$13.48
SA5PCEND	5" Poly Cupped Flight END Module	\$13.48
SA5HTSS	Stainless Steel Centre Hex Tube per foot	\$19.28
SA5HTSS21	Stainless Steel Centre Hex Tube 21 ft	\$382.64
SA5HTSS30	Stainless Steel Centre Hex Tube 30 ft	\$492.66
	5" Poly Cupped on Stainless Steel Hex Centre Tube per foot	\$60.34
SA5MDC	Motor Drive Connector – MS	\$13.46
SA5HCSS	5" all Hex Coupler – SS	\$19.69
SA5MDCSS	Motor Drive Connector –SS	\$22.25
SA5-58PSM	5 5/8" POLY STRAIGHT FLIGHT MODULE	\$23.74

7" POLY CUPPED FLIGHTING ASSEMBLY

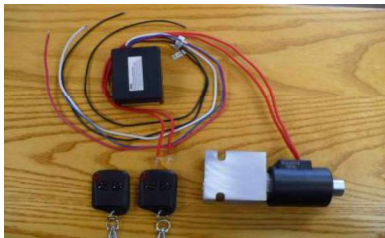
		LIST PRICE
	7" Poly Cupped on Stainless Steel Centre Tube per foot	\$66.43
SA7PCSFSS21	7" Poly Cupped flight mounted on SS Hex core x 21 ft	\$1,395.01
SA7PCM	7" Poly Cupped Flight Module (*5.76 per inch)	\$19.69
SA7PCEND	7" Poly Cupped END Module	\$26.81
SA7HTSS21	7" Stainless Steel Centre Tube, 21 feet	\$429.76
SA7HC	7" Centre Hex Tube Connector	\$57.95



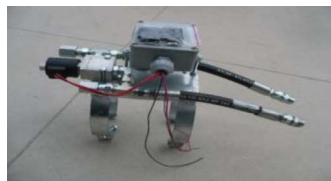
SEED AUGER ACCESSORIES & REPLACEMENT PARTS

2024

<u>PART #</u>	<u>DESCRIPTION</u>	<u>LIST</u>
EM-HM6	255115F3005AAAA WHITE 6 CUBIC INCH ORBIT MOTOR C/W HOLE IN SHAFT	\$613.36
EM-HMMC	BHIH888BXO MANUAL OFF/ON CONTROL FOR EM-HM6	\$191.02
EM-HM6VM	255115F3705AAAA WHITE 6 CUBIC INCH ORBIT MOTOR C/W HOLE IN SHAFT (VALVE CONTROL MOUNTS ON MOTOR)	\$468.67
SA-200018022	REPLACEMENT O-RING FOR VALVE MOUNT UNIT	\$1.21
EM-HMVMC	BH1D8800BXO CONTROL VALVE MOUNTS ON MOTOR FOR EM-HM6MV MOTORS	\$104.60
EM-HM10	255160F3005AAAA WHITE 10 CUBIC INCH ORBIT MOTOR C/W HOLE IN SHAFT	\$637.88
EM-HMMC	BHIH888BXO MANUAL OFF/ON CONTROL FOR EM-HM10	\$191.08
EM-HM12.5	300200F8620AAAAB WHITE 12.5 CUBIC INCH MOTOR	\$1,384.80
SA-200222002B	200 222 002B SEAL KITS FOR SQUARE MOTOR	\$69.30
SA-255222001	255 222 001 SEAL KITS FOR ROUND MOTOR	\$122.23
EM-HMA7623T14	350200A7623AAAAAB DANFOSS MOTOR 14 TOOTH, 2 BOLT	\$1,173.98
EM-HMA7620K1.25	350200A7620AAAAAB DANFOSS MOTOR KEYED 1.25", 2 BOLT	\$1,173.28
EM-RM0212V	WIRELESS REMOTE KIT 12 VOLT c/w 2 Remotes (Remote kit less Battery and wiring)	\$124.95
HFSV10-21	SOLENOID VALVE FOR REMOTE KIT	\$290.42



valve and remote only



complete kit ready to go on auger

EM-RMSVKIT	COMPLETE KIT WITH HYDRAULIC FITTINGS	\$932.18
	WIRELESS REMOTE KIT 12 VOLT c/w 2 Remote SOLENOID VALVE FOR REMOTE KIT (INCLUDE ALL PLUMBING AND WIRE KIT)	

EM-01T0SL	LUNDELL FREEFLO WIRELESS REMOTE ONLY W/1 KEY (Valve only all plumbing and wiring is extra)	\$714.24
-----------	--	----------

SOLENOID VALVE FOR REMOTE KIT
(Remote kit less Battery and wiring)



valve and remote only



complete kit ready to go on auger

EM-01T0SL & HFSV10-21 ONLY	EM-01T0SLKIT	
EM-01T0SLKIT	COMPLETE UNIT READY TO MOUNT ON AUGER	\$1,530.77
WIRELESS REMOTE KIT 12 VOLT c/w 1 Remote	SOLENOID VALVE FOR REMOTE KIT (INCLUDE ALL PLUMBING AND WIRE KIT)	

SEED AUGER ACCESSORIES & REPLACEMENT PARTS

2024

<u>PART #</u>	<u>DESCRIPTION</u>	<u>LIST</u>
EM6125-OMPOS	OLD STYLE ORBIT MOTOR PLATES	\$61.07
EM-600-OMPNS	NEW STYLE ORBIT MOTOR PLATE	\$122.71
EM800-FROMPNS	NEW STYLE ORBIT MOTOR PLATE	\$125.81
EM-2BOMP	2-BOLT ORBIT MOTOR PLATE	\$61.07
EM-PSBB176228W	SPHERICAL WOOD 1 1/16" BEARING	\$47.21
EM600-HD90O	HEAVY DUTY BOLT ON 6" 90 DEG. OUTLET	\$263.33
EM800-HD90O	HEAVY DUTY BOLT ON 8" 90 DEG. OUTLET	\$301.62
EM600-HCS-2	6" X 2" WIDE 1/2 CLAMP SET W/HARDWARE	\$50.91
EM600-HCS-3	6" X 3" WIDE 1/2 CLAMP SET W/HARDWARE	\$59.04
EM6.625-HCS-3	6 5/8" HALF CLAMP SET 3" WIDE W/HARDWARE	\$28.54
EM800-HCS-2	8" X 2" WIDE 1/2 CLAMP SET W/ HARDWARE	\$31.13
EM800-HCS-3	8" X 3" WIDE 1/2 CLAMP SET W/HARDWARE	\$59.87
EM8.625-HCS-3	8 5/8" HALF CLAMP SET 3" WIDE W/HARDWARE	\$34.89
EM-600TCHC	6" TUBE CLAMP W/HYDRAULIC LINE CLIPS	\$41.95
EM-800TCHC	8" TUBE CLAMP W/HYDRAULIC LINE CLIPS	\$39.19
EM600-IG	6" INTAKE GUARD W/BEARING (NO HITCH)	\$469.80
EM800-IG	8" INTAKE GUARD W/BEARING (NO HITCH)	\$499.56
EM10150IG/WF	10" INTAKE GUARD W/BEARING (NO HITCH)	\$330.99
EM-Y2000-7	HITCH FOR ABOVE INTAKE GUARDS	\$123.75
EM-Y2000-7-6	INTAKE GUARD HITCH PIN	\$18.18
ELM-006	1/2" HYD HOSES 25' LONG 1/2NPT MALE SOLID 1/2NPT MALE SWIVEL WITH S71-4	\$457.01
S71-4	1/2" NPT MALE COUPLER ENDS S71-4 PIONEER MALE END	\$19.21
S40-4	1/2" NPT MALE AND FEMALE QUICK DISCONNECT COUPLER SET	\$29.94
S44-4	DUST PLUG	\$5.48
S49-4	DUST CAP	\$5.48
S42-4	BREAK AWAY CLAMP	\$39.67
EM-Y2000-BB	BATTERY BOX FOR Y 2000	\$103.50
SDR26-6	6" POLY TUBE 20' LENGTH	\$544.69
SDR26-8	8" POLY TUBE 20' LENGTH	\$833.31

SEED AUGER ACCESSORIES & REPLACEMENT PARTS

2024


<u>PART #</u>	<u>DESCRIPTION</u>	<u>LIST</u>
EM6X075GAL	6"OD X 15GA GALVANIZED TUBE	\$25.19
EM8X075GAL	8"OD X 15GA GALVANIZED TUBE	\$35.81
EM400-FP	4" BLACK PLASTIC FLEX PIPE	\$15.89
EM600-FP	6" BLACK PLASTIC FLEX PIPE	\$27.85
EM800-FP	8" BLACK PLASTIC FLEX PIPE	\$33.17
EM400-RF	4" RUBBER FLEX PIPE	\$25.53
SA6FH	6" REPLACEMENT TELESCOPIC SPOUT PLASTIC FLEX HOSE per foot	\$37.95
SA6FH-PKG	6" X 16" LONG REPLACEMENT TELSCOPIC SPOUT FLEX HOSE C/W 4 POP RIVETS & 4 FENDER WASHERS	\$86.36
SA8FH	8" REPLACEMENT TELESCOPIC SPOUT PLASTIC FLEX HOSE per foot	\$64.56
SA8FH-PKG	8" X 16" LONG REPLACEMENT TELSCOPIC SPOUT FLEX HOSE C/W 4 POP RIVETS & 4 FENDER WASHERS	\$107.87
EM400-GCHF60	4" GEAR CLAMP	\$3.04
EM600-GCHF96	6" GEAR CLAMP	\$4.88
EM800-GCHF128	8" GEAR CLAMP	\$4.44
SA6TBCL	6" T BOLT CLAMP FOR TELESCOPING DOWN SPOUT	\$11.75
SA8TBCL	8" T BOLT CLAMP FOR TELESCOPING DOWN SPOUT	\$15.99
SA10TBCL	10" T BOLT CLAMP FOR TELESCOPING DOWN SPOUT	\$34.16
EM-WB6	6" WINCH BRACKET ASSEMBLY	\$125.93
EM-WB8	8" WINCH BRACKET ASSEMBLY	\$106.12
EM-Y2000-10	HYDRAULIC HOSE HOLDER	\$105.23
EM-Y2000-40	SAFETY CHAIN	\$49.04
EM-SMV	SMV SIGN	\$11.71
EM600/800-PH	STANDARD PLASTIC HOPPER 5" TO 8" AUGER	\$249.23
EM-PHBD	BIG DADDY PLASTIC HOPPER FOR 10" AUGERS	\$273.70
EM-PHRS	REPLACEMENT STRAPS FOR HOPPERS	\$21.00
EM350/400MPH	MINI PLASTIC HOPPER 350/400 AUGERS	\$148.83
EM-195	6" PLASTIC CROSS AUGER HOPPER & LID ASSEMBLY W/ SAFETY GRILL	\$421.36
EM-196	6" PLASTIC DROPS W/ SCREWS FOR 6" CROSS AUGER	\$139.84
EM-197	PLASTIC SHUT OFF SLIDE FOR 6" CROSS AUGER	\$17.02



<u>PART #</u>	<u>DESCRIPTION</u>	<u>LIST</u>
SA62S47	6" 2 STAGE TELESCOPIC DOWNSPOUT 4' - 7' w Handle	\$334.72
SA63S513	6" 3 STAGE TELESCOPIC DOWNSPOUT 5' - 13' w Handle	\$454.27
SA63S616	6" 3 STAGE TELESCOPIC DOWNSPOUT 6' 16' w/Handle	\$446.78
SA82S47	8" 2 STAGE TELESCOPIC DOWNSPOUT 4' - 7' w Handle	\$308.20
SA82S611	8" 2 STAGE TELESCOPIC DOWNSPOUT 6' - 11' w Handle	\$410.55
SA83S616	8" 3 STAGE TELESCOPIC DOWNSPOUT 6'-16' w Handle	\$531.30
SA102S611	10" 2 STAGE TELESCOPIC DOWNSPOUT 6'-11' w Handle	\$769.60
K1051	1400 LBS SAFETY BRAKE WINCH	\$297.80

SEED AUGER ACCESSORIES & REPLACEMENT PARTS

2024

<u>PART #</u>	<u>DESCRIPTION</u>	<u>LIST</u>
EM350/400-MPH	PLASTIC MINI HOPPER (3 1/2" - 4 " AUGERS)	\$ 148.83
		
EM600/800-PH	STANDARD PLASTIC HOPPER (5"-8" AUGERS)	\$ 249.23
		
EM-PHBD	BIG DADDY PLASTIC HOPPER FOR 10" AUGERS	\$ 273.70
		
EM-PHRS	PLASTIC HOPPER REPLACEMENT STRAPS	\$ 21.00